

OFF ROAD BOOTS 2023/2024

  
GAERNE



Romain Febvre



SOUL, MIND AND BODY CONCENTRATED ON A SINGLE GOAL: TO CREATE A HIGH-PERFORMANCE BOOT THAT COMBINES ITALIAN MADE CRAFTSMANSHIP WITH CUTTING-EDGE MATERIALS AND TECHNICAL SOLUTIONS. JUST LIKE THE ENGLISH TERM "HORSEPOWER" REFERS NOT ONLY TO AN ENGINE BUT ALSO TO A CAPABILITY OF MAKING A DIFFERENCE, OUR BOOTS ARE DESIGNED WITH THE SAME COMMITMENT, STRENGTH, AND POWER OF ACTIONS AND DECISIONS. THESE IDEAS SET THE FIRST STEPS OF THE SG.22 IN MOTION. SO WHETHER YOU'RE HITTING THE RACE TRACK OR BLAZING YOUR OWN TRAIL, OUR BOOTS WILL HELP YOU CONQUER ANY CHALLENGE WITH STYLE AND CONFIDENCE.

# SG22

**A new Horsepower on the dirt ground!**

#### Aluminium Superlight Buckles

With new painted finish, the upper one is adjustable in three positions, combined with the **Frontal Shin Guard** adjustable in two position to obtain multiple configurations



#### Air Vents

Facilitate the evacuation of humidity and heat, working together with the new interior lining equipped with 3D channels



#### New 3d Main Body Toe Box

Which adopts a three-dimensional preformed construction, reducing the height between the sole and the gear guard.



#### Newly Designed Razorback

Featuring advanced motion geometries, allowing the boot to better adapt to the ankle's movement. The **Dual Stage Pivot System 1.0** limits hyperextension, hyperflexion and lateral movements.



#### Inner Leg Featuring The Grip Guard 1.0

Improving the protection and optimizing the coefficient of friction for better riding feel



#### Dual Density Sole

To guarantee great grip and durability. The **Microshock heel** features a compound with different densities to provide protection from micro-impact. New **Steel Bumper 1.0** to reduce thickness and weight.



**2262 001** SG22 BLACK  
EU 41 42 43 44 45 46 47 48 US 7 8 9 10 11 12 13



**2262 005** SG22 RED  
EU 41 42 43 44 45 46 47 48 US 7 8 9 10 11 12 13

MADE IN ITALY

# SG22



**2262 017** SG22 ANTHRACITE/WHITE/GREY  
EU 41 42 43 44 45 46 47 48 US 7 8 9 10 11 12 13



**2262 004** SG22 WHITE  
EU 41 42 43 44 45 46 47 48 US 7 8 9 10 11 12 13



**2262 008** SG22 ORANGE/WHITE/GREY  
EU 41 42 43 44 45 46 47 48 US 7 8 9 10 11 12 13



**2262 007** SG22 ANTHRACITE/BLACK/RED  
EU 41 42 43 44 45 46 47 48 49 US 7 8 9 10 11 12 13 14



SG.22 GORE-TEX FOR RIDERS WHO DRIVES THEIR MOTORCYCLE OFF THE BEATEN TRACK! THIS BOOT IS LINED WITH GORE-TEX® MEMBRANE, IT FEATURES DEDICATED ENDURO COMPOUND RUBBER SOLE TO PROVIDE EXTRA GRIP AND OPTIMUM FEELING ON EVERY TERRAIN

MADE IN ITALY

# SG22 GORE-TEX®



**2263** SG.22 GORE-TEX ENDURO ANTHRACITE  
**007** EU 41 42 43 44 45 46 47 48 | US 7 8 9 10 11 12 13



Mario Roman



CHOICES CREATE CHAMPIONS, BUT SUPPORT IS WHAT KEEPS THEM AT THE TOP, WHICH IS WHY THE SG-12 BOOT IS THE CHOICE FOR RIDERS WHO ASPIRE TO RISE ABOVE THE COMPETITION. FROM BOX TO BIKE WITH MINIMAL BREAK-IN, GAERNE'S SG-12 BOOTS ARE MADE IN ITALY BY PRACTICED HANDS THAT STEP-BY-STEP LAYER SUPPORT, SECURITY, AND COMFORT INTO EACH BOOT. THE PREMIUM SG-12 OFFERS A STREAMLINED TOE BOX FOR PRECISION CONTROL, A DUAL-STAGE PIVOT SYSTEM FOR MORE AGGRESSIVE RIDERS, AN ANTI-SHOCK COMPOSITE SOLE FOR BETTER CONNECTION TO THE PEGS, SLIMLINE INNER GRIP GUARD PANELS FOR BETTER CONTROL AND GRIP OF THE BIKE, MEMORY FOAM INTERIOR FOR A CUSTOMIZED FIT, AND AN ADJUSTABLE SHIN PLATE FOR MORE ROOM AROUND THE CALVES. OUR BUCKLE SYSTEM MAKES IT EASY TO GET IN AND GET GOING, SO A RIDER CAN FOCUS LESS ON GEAR AND MORE ON THE RIDE.

# SG12

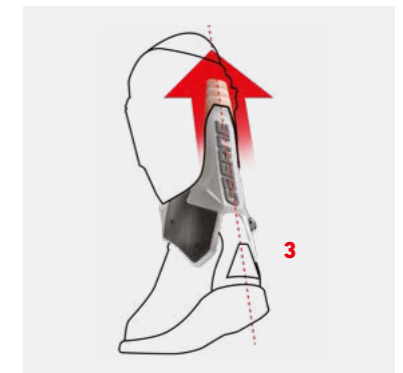
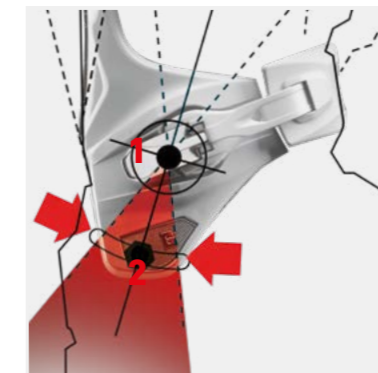
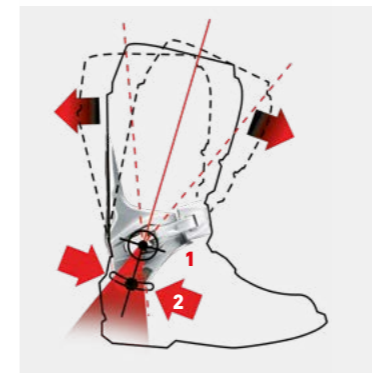
Quality comfort pride!

### Dual Stage Pivot System.

**1** This revolutionary system is patented and exclusive to Gaerne. The first pivot is attached to the "Razorback"  
**2** The second pivot is fixed on a sliding glide that allows the rider's foot to feel

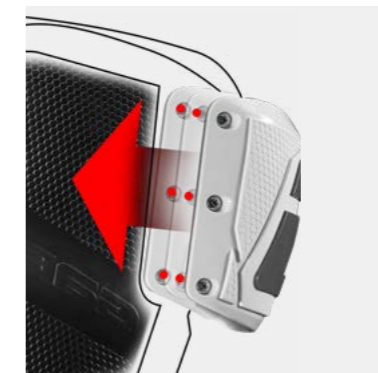
natural while on the peg in a shifting or breaking situation - However, it will "bottom out" and absorb shock in the case of over-jumping a jump or in the case of unwanted compression.

**3** This provides a rigid component that offers a strong lateral support while a glide-plate keeps the upper in a firm and upright position



### Front Plate/Shin Guard.

The Thermoplastic shin plate is anatomically shaped for a perfect fit. By removing three screws you can also make the opening wider to accommodate a bigger leg or knee-brace.



### Dual Composite Sole.

Anti-shock rubber that has made Gaerne soles famous around the world





MADE IN ITALY **SG12**



<b>2174</b>	<b>SG12 RED BLACK</b>
<b>105</b>	EU 41 42 43 44 45 46 47 48   US 7 8 9 10 11 12 13



<b>2174</b>	<b>SG12 ORANGE/GREY/WHITE</b>
<b>083</b>	EU 41 42 43 44 45 46 47 48   US 7 8 9 10 11 12 13



<b>2174</b>	<b>SG12 WHITE</b>
<b>074</b>	EU 41 42 43 44 45 46 47 48 49   US 7 8 9 10 11 12 13 14



<b>2174</b>	<b>SG12 BLACK/WHITE</b>
<b>014</b>	EU 41 42 43 44 45 46 47 48   US 7 8 9 10 11 12 13



<b>2174</b>	<b>SG12 BLACK/YELLOW FLUO</b>
<b>089</b>	EU 41 42 43 44 45 46 47 48   US 7 8 9 10 11 12 13



<b>2174</b>	<b>SG12 BLACK</b>
<b>071</b>	EU 41 42 43 44 45 46 47 48 49   US 7 8 9 10 11 12 13 14



<b>2177</b>	<b>SG12 ENDURO BLACK</b>
<b>071</b>	EU 41 42 43 44 45 46 47 48 49   US 7 8 9 10 11 12 13 14

R.J. Hampshire





A RESTYLED RIDER FAVORITE, THE CLASSIC SG-10 WAS THOUGHTFULLY REDESIGNED TO REMAIN SUPPORTIVE AND SIMPLE, YET FUNCTIONAL IN ALL THE WAYS RIDERS NEED, TO FEEL COMFORTABLE AND CONFIDENT. WITH ONE OF THE ROOMIEST TOE BOXES AROUND AND A PLUSH FIT, THE SG-10 REMAINS COMFORTABLE YET SUPPORTIVE, WITH ITS WRAP AROUND PIVOT SYSTEM FOR STABILITY, SLIMLINE RUBBER INNER GRIP GUARD PANELS FOR ADDED BIKE CONTROL, GAERNE'S SPECIALIZED DUAL COMPOSITE SOLE FOR A CLOSE CONNECTION WITH THE PEGS, AND AN ADJUSTABLE ALLOY BUCKLE SYSTEM THAT ALLOWS THE BOOT UPPER TO EXPAND WHEN MORE SPACE IS NEEDED IN THE CALF AREA. INSIDE AND OUT, THE SG-10 IS CREATED IN ITALY WITH THE COMFORT, QUALITY, AND PRIDE THAT HAVE ALWAYS BEEN AT THE HEART OF GAERNE.

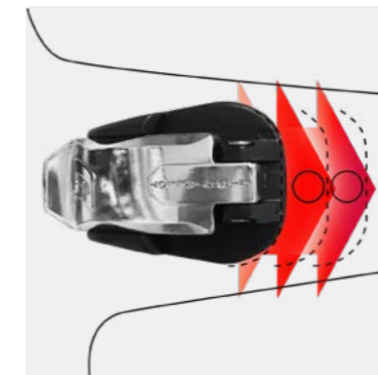
# SG10

## Classic support confident ride



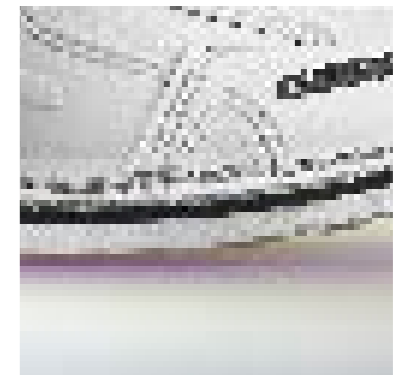
### RAZOR BACK PIVOT SYSTEM

Grants a strong lateral support, without compromising the flexibility. Instep area with soft microfiber for superior comfort.



### CLOSURE SYSTEM

Closure system consist of 4 light alloy replaceable buckles for an easy, fast and precise closure. The first two buckles on top can be unscrewed and moved in order to accommodate a bigger leg or knee brace.



### DUAL COMPOSITE RUBBER SOLE

with traditional goodyear construction offering durability and superior grip on the bike.



**2190 001** **SG10 BLACK**  
 EU 39 40 41 42 43 44 45 46 47 48 49    **US** 6 7 8 9 10 11 12 13 14

MADE IN ITALY **SG10**



**2190 014** **SG10 BLACK/WHITE**  
 EU 39 40 41 42 43 44 45 46 47 48    **US** 6 7 8 9 10 11 12 13

MADE IN ITALY **SUPERMOTARD**



Photo credit: Davide Messora

**Thomas Chareyre**  
 SUPERMOTO  
 WORLD CHAMPION

MX LINE



**4673 001**  
 VSM SUPERMOTARD ORANGE



**4674 001**  
 VSM KIT RUBBER SLIDER



**4674 002**  
 VSM KIT PLASTIC SLIDER



**2191 001** **SG10 SUPERMOTARD BLACK**  
 EU 39 40 41 42 43 44 45 46 47 48 49    **US** 6 7 8 9 10 11 12 13 14

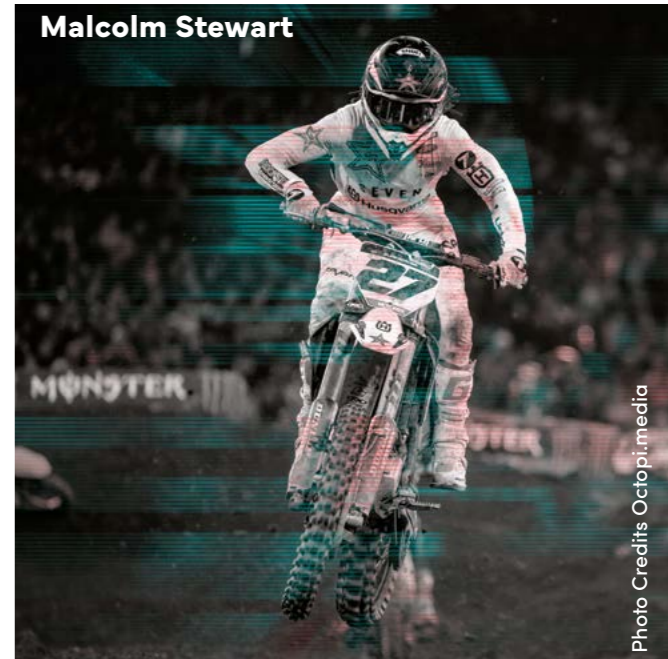
THIS INNOVATIVE BOOT HAS A SLEEK NEW LOOK. PARTIALLY DUE TO THE EXCLUSIVE GAERNE "WRAP AROUND" ANKLE PIVOT SYSTEM. THIS NEW LIGHTWEIGHT FEATURE ALLOWS THE RIDER MORE ANKLE SUPPORT WHILE AT THE SAME TIME GIVES YOU A COMFORTABLE FIT. ALLOY BUCKLES, HEAVY DUTY BURN GUARD, TOE BUMPER AND THE TRADEMARK GAERNE SOLE COMPLETE THE TASK, SEE THE FASTBACK ENDURANCE AT A DEALER NEAR YOU!



**2196** FASTBACK ENDURANCE WHITE  
**004** EU 39 40 41 42 43 44 45 46 47 48 49 | US 6 7 8 9 10 11 12 13 14



**2196** FASTBACK ENDURANCE BLACK  
**001** EU 39 40 41 42 43 44 45 46 47 48 49 | US 6 7 8 9 10 11 12 13 14



Malcolm Stewart

Photo Credits Octopl.media



Closure system consist of 4 light alloy replaceable buckles for an easy, fast and precise closure. The first two buckles on top can be unscrewed and moved in order to accommodate a bigger leg or knee brace.

MADE IN ITALY

# FASTBACK ENDURANCE



**2196** FASTBACK ENDURANCE ORANGE  
**008** EU 39 40 41 42 43 44 45 46 47 48 | US 6 7 8 9 10 11 12 13



**2197** FASTBACK ENDURANCE ENDURO BROWN  
**013** EU 39 40 41 42 43 44 45 46 47 48 | US 6 7 8 9 10 11 12 13





GX1 INCORPORATES TECHNOLOGY AND STYLING THAT FEATURES PROTECTION AND PERFORMANCE, PROVIDING AN IMMEDIATE STEP IN COMFORT, HIGH QUALITY MATERIAL AND MADE IN ITALY

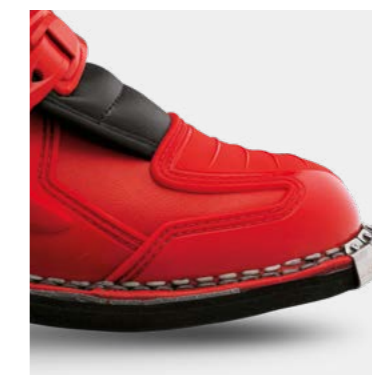
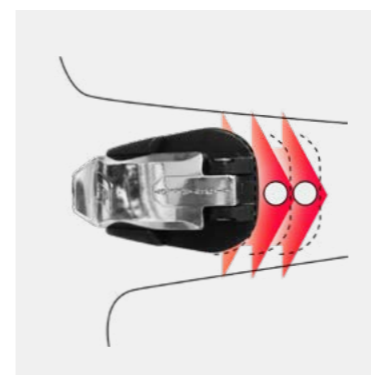
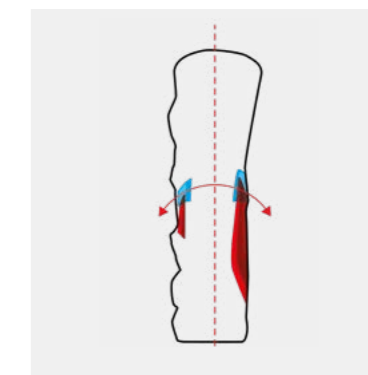
# GX1

## The latest innovative entry level boot for off-road

### STRUCTURAL SUPPORT

The structural support consists of two lugs that slide inside designed pockets

avoiding front and rear overextension while providing flex forwards and backwards, it is anti-torsion.



Closure system consist of 4 light alloy replaceable buckles for an easy, fast and precise closure. The first two buckles on top can be unscrewed and moved in order to accommodate a bigger leg or knee brace.

Exclusive high grip rubber compound sole to grant durability, superior grip and perfect feeling while riding.

On the upper side stamped suede for increased grip and heat resistance

Calvin Vlaanderen



Photo Credits Team Gebben



**2192 001** **GX1 BLACK**  
EU 39 40 41 42 43 44 45 46 47 48 49 **US** 6 7 8 9 10 11 12 13 14



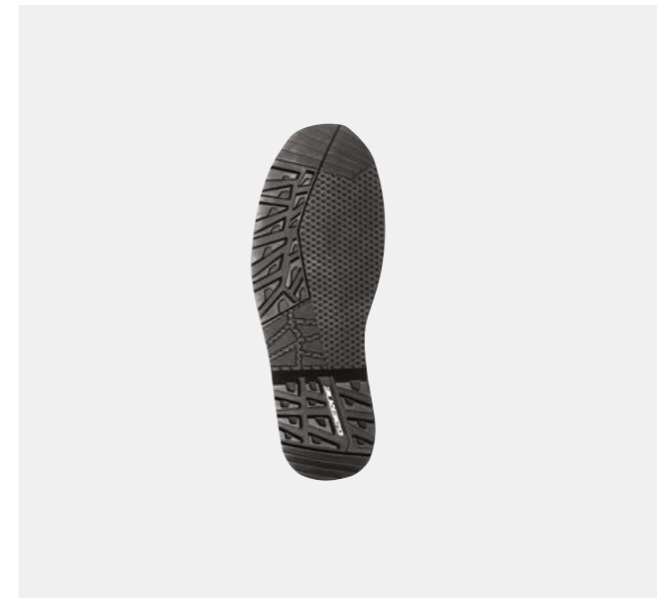
**2192 019** **GX1 YELLOW BLACK**  
EU 39 40 41 42 43 44 45 46 47 48 **US** 6 7 8 9 10 11 12 13

MADE IN ITALY

**GX1**



**2192 028** **GX1 ORANGE WHITE**  
EU 39 40 41 42 43 44 45 46 47 48 **US** 6 7 8 9 10 11 12 13



**2194 001** **GX1 ENDURO BLACK**  
EU 39 40 41 42 43 44 45 46 47 48 49 **US** 6 7 8 9 10 11 12 13 14



**2192 025** **GX1 RED WHITE**  
EU 39 40 41 42 43 44 45 46 47 48 **US** 6 7 8 9 10 11 12 13



**2192 014** **GX1 WHITE BLACK**  
EU 39 40 41 42 43 44 45 46 47 48 49 **US** 6 7 8 9 10 11 12 13 14



<b>2193</b>	<b>GX1 EVO BLACK WHITE</b>
<b>014</b>	<b>EU 39 40 41 42 43 44 45 46 47 48 US 6 7 8 9 10 11 12 13</b>



<b>2193</b>	<b>GX1 EVO YELLOW BLACK</b>
<b>019</b>	<b>EU 39 40 41 42 43 44 45 46 47 48 US 6 7 8 9 10 11 12 13</b>



<b>2193</b>	<b>GX1 EVO BLACK</b>
<b>001</b>	<b>EU 39 40 41 42 43 44 45 46 47 48 US 6 7 8 9 10 11 12 13</b>

MADE IN ITALY

# GX1 EVO




<b>2193</b>	<b>GX1 EVO RED WHITE</b>
<b>025</b>	<b>EU 39 40 41 42 43 44 45 46 47 48 US 6 7 8 9 10 11 12 13</b>



Photo Credits Gas Gas Media Library / Future7media

## Andrea Verona

A PREMIUM BOOT DESIGNED SPECIFICALLY FOR JUNIOR RIDERS, THE FUTURE MOTOCROSS CHAMPIONS! THE ANTI TORSION STRUCTURAL AVOIDS FRONT AND REAR OVER EXTENSIONS WHILE PROVIDING FLEX FORWARDS AND BACKWARDS, SUEDE LEATHER ON THE INSIDE CALF AREA, ALUMINIUM TOE CUP MAKE THESE BOOTS HIGHLY DURABLE. FOUR ALUMINIUM REPLACEABLE AND ADJUSTABLE BUCKLES TO PERSONALIZE THE FITTING.

 Closure system consist of 4 light alloy replaceable buckles for an easy, fast and precise closure. The first two buckles on top can be unscrewed and moved in order to accommodate a bigger leg or knee brace.

MADE IN ITALY

**GXJ**



<b>2169</b>	<b>GXJ BLACK/ORANGE</b>
<b>008</b>	EU 33 34 35 36 37 38 39 40 41 US 12 3 4 5 6 7



MX LINE



<b>2169</b>	<b>GXJ BLACK/WHITE</b>
<b>004</b>	EU 33 34 35 36 37 38 39 40 41 US 12 3 4 5 6 7



<b>2169</b>	<b>GXJ GREY/YELLOW FLUO</b>
<b>009</b>	EU 33 34 35 36 37 38 39 40 41 US 12 3 4 5 6 7



<b>2169</b>	<b>GXJ BLACK/BLUE</b>
<b>003</b>	EU 33 34 35 36 37 38 39 40 41 US 12 3 4 5 6 7



<b>2169</b>	<b>GXJ BLACK/RED</b>
<b>005</b>	EU 33 34 35 36 37 38 39 40 41 US 12 3 4 5 6 7



MADE IN ITALY

**SGJ**

DESIGNED AND DEVELOPED FOR YOUNG RIDERS, THE SG.J OFFERS HIGH LEVELS OF PROTECTION AND COMFORT. MADE IN ITALY WITH EXCLUSIVE HIGH QUALITY MATERIAL. OUTSIDE MALLEOLUS THERMOPLASTIC SHIELD REINFORCEMENT AND SUEDE LEATHER ON THE INSIDE CALF AREA, ALUMINUM TOE CUP AND FOUR REPLACEABLE AND ADJUSTABLE BUCKLES TO PERSONALIZE THE FITTING.



<b>2199</b>	<b>SGJ FLUO YELLOW</b>
<b>009</b>	EU 33 34 35 36 37 38 39 40 41 US 1 2 3 4 5 6 7



<b>2199</b>	<b>SGJ BLACK</b>
<b>001</b>	EU 33 34 35 36 37 38 39 40 41 US 1 2 3 4 5 6 7





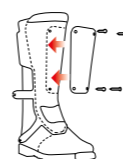
<b>2480</b>	<b>GMX MACH 80 WHITE</b>
<b>004</b>	EU 40 41 42 43 44 45 46 47 48    US 6 7 8 9 10 11 12 13



<b>2480</b>	<b>GMX MACH 80 BLACK</b>
<b>001</b>	EU 40 41 42 43 44 45 46 47 48    US 6 7 8 9 10 11 12 13

MADE IN ITALY

# GMX MACH 80



**4753-001**  
GMX MACH 80 FRONTAL PLATES  
KIT VICTORY



**4753-002**  
GMX MACH 80 FRONTAL PLATES  
KIT STARS



**4753-003**  
GMX MACH 80 FRONTAL  
PLATES  
KIT STRIPES



**4753-004**  
GMX MACH 80 FRONTAL PLATES  
KIT ORIGIN



THE NEW MOTOCROSS GAERNE BOOT, A MUST HAVE IN THE WARDROBE OF THE MOTORCYCLIST WHO LOVES OFF-ROADING. THE BOOT INTERPRETS THE MX STYLE OF THE 80S, TAKING UP MATERIALS AND SHAPES THAT HAVE CHARACTERIZED ONE OF THE MOST IMPORTANT DECADES OF THIS DISCIPLINE. AT THE SPEED OF THE 80S! THE GMX MACH 80 IS CHARACTERIZED BY THE PRESENCE OF A FRONT PLATE WHOSE GRAPHICS PRESENT THE BRAND IN ITS ORIGINAL FORMS. THE PLATE IS REMOVABLE .



Arnau Farre



Closure system consist of 4 light alloy replaceable buckles for an easy, fast and precise closure. The first two buckles on top can be unscrewed and moved in order to accommodate a bigger leg or knee brace.



**2532** **BALANCE CLASSIC YELLOW BLACK**  
**059** EU 38 39 40 41 42 43 44 45 46 47 48 49 | US 5 6 7 8 9 10 11 12 13 14

MADE IN ITALY

# BALANCE XTR



**2533** **BALANCE XTR BLACK**  
**001** EU 38 39 40 41 42 43 44 44.5 45 46 47 48 | US 5 6 7 8 9 10 11 12 13



**2533** **BALANCE XTR WHITE**  
**004** EU 38 39 40 41 42 43 44 44.5 45 46 47 48 | US 5 6 7 8 9 10 11 12 13

MADE IN ITALY

# BALANCE CLASSIC



**2532** **BALANCE CLASSIC RED BLACK**  
**055** EU 38 39 40 41 42 43 44 45 46 47 48 49 | US 5 6 7 8 9 10 11 12 13 14

THIS TRIAL BOOT IS MADE WITH MICROFIBER TO GRANT LIGHTNESS AND COMFORT. IT IS ALSO WATERPROOF THANKS TO GAERNE DRYTECH MEMBRANE. A GUM RUBBER SOLE COMPLETES THE TASK FOR A GREAT FEEL AND CONTROL OF THE BIKE!

THIS EXTREMELY DURABLE BOOT IS MADE WITH A FULL GRAIN OILED LEATHER. IT IS ALSO WATERPROOF THANKS TO THE BREATHABLE MEMBRANE "GAERNE DRYTECH". A GUM RUBBER SOLE COMPLETES THE TASK FOR A GREAT FEEL AND CONTROL OF THE BIKE.

MADE IN ITALY

# BALANCE OILED



**2522** BALANCE OILED BROWN  
**013** EU 38 39 40 41 42 43 44 45 46 47 48 49 US 5 6 7 8 9 10 11 12 13 14

Gabriel Marcelli



Photo Credits Pep Segales

TRIAL LINE

MADE IN ITALY

# BALANCE PRO TECH

THIS BOOT IS MADE OF LEATHER CONSTRUCTION AND THE SOLE IS GUM RUBBER TO PROVIDE FEEL AND CONTROL.



**2524** BALANCE PRO TECH BLACK  
**001** EU 38 39 40 41 42 43 44 45 46 47 48 49 US 5 6 7 8 9 10 11 12 13 14

**2524** BALANCE PRO TECH BROWN  
**013** EU 38 39 40 41 42 43 44 45 46 47 48 49 US 5 6 7 8 9 10 11 12 13 14

**ON ROAD BOOTS 2023/2024**





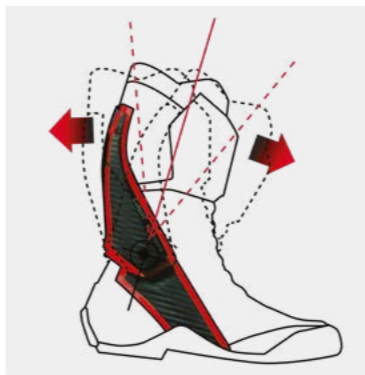
GP1 EVO IS THE ULTIMATE RACING BOOT FROM GAERNE'S RESEARCH CENTRE, DEVELOPED IN COOPERATION WITH PROFESSIONAL RIDERS. FLOATING SYSTEM ALLOWS THE FOOT TO MOVE NATURALLY AND PREVENTS ANKLE TWISTING, TWO RUBBER INSERTS ON THE INNER CALF AND HEEL PROVIDE ADDITIONAL GRIP AND PROTECT THE LEG FROM HEAT. ADJUSTABLE AND REPLACEABLE BOA IP1 REEL ENABLES A CUSTOM-FIT AROUND THE CALF AREA. HIGH- WEAR-RESISTANT MAGNESIUM TOE SLIDER AND VARIABLE DENSITY, OIL AND WEAR-RESISTANT RUBBER SOLE FEATURES THIS MADE IN ITALY TOP OF THE RANGE RACING BOOT.

# GP1 EVO

## Made for racing

**GAERNE FLOATING SYSTEM:**

Made of carbon composite, allows the foot to move without compromising flexibility and preventing hyper extension or compression.



**SLIDER:**

High- wear-resistant magnesium toe slider allows for totally free foot movement. Attachment points are well away from the areas that normally suffer from abrasion.

**SHOCK ABSORBING HEEL CUP:**

Non-deformable polyurethane heel cup is protected by a replaceable low-friction magnesium slider. Anti-shock heel features an internal comfort-enhancing decompression zone, located between the insole and sole.



**ADJUSTABLE CALF CLOSURE SYSTEM:**

Adjustable and replaceable BOA IP1 reel enables a custom-fit around the calf area

**GRIP GUARD:**

Two rubber inserts (inner calf and heel) provide additional grip and protect the leg from engine/exhaust heat.



**SOLE:**

Variable density, oil and wear-resistant, rubber sole features a unique design that provides excellent grip.



<b>2451</b>	<b>GP1 EVO WHITE\BLACK\YELLOW</b>
<b>051</b>	<b>EU 39 40 41 42 43 44 45 46 47 48   US 6 7 8 9 10 11 12 13</b>



<b>2451</b>	<b>GP1 EVO BLACK</b>
<b>001</b>	<b>EU 39 40 41 42 43 44 45 46 47 48   US 6 7 8 9 10 11 12 13</b>

MADE IN ITALY

# GP1 EVO

BOA | IP<sup>1</sup> |  THE BOA GUARANTEE



<b>2451</b>	<b>GP1 EVO NARDO / GREY / RED</b>
<b>015</b>	<b>EU 39 40 41 42 43 44 45 46 47 48   US 6 7 8 9 10 11 12 13</b>

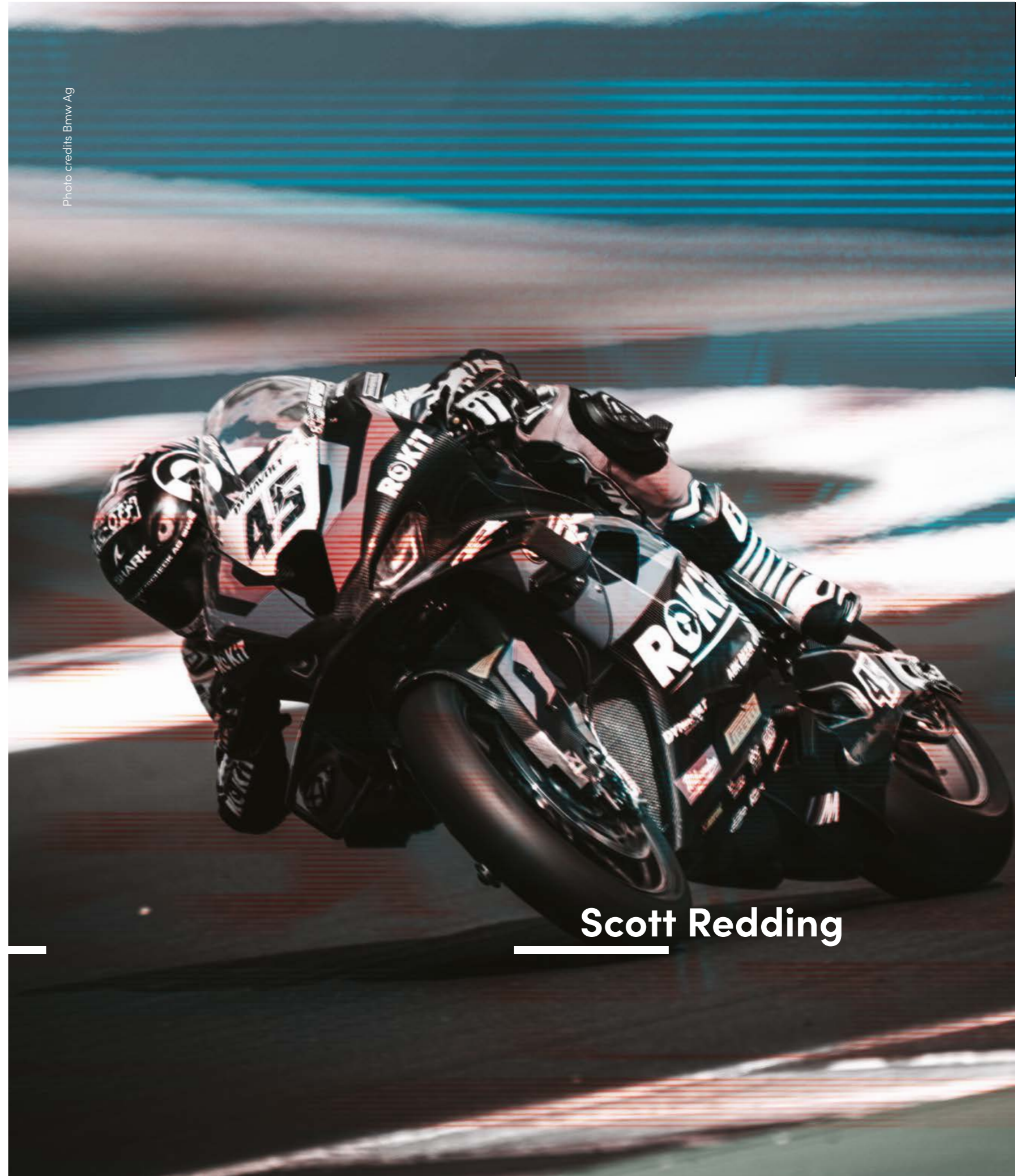


Photo credits Bmw Ag

**Scott Redding**



**2452** **G\_RS BLACK**  
**001** EU 39 40 41 42 43 44 45 46 47 48 | **US** 6 7 8 9 10 11 12 13



**2453** **G\_RT BLACK/WHITE/YELLOW**  
**004** EU 39 40 41 42 43 44 45 46 47 48 | **US** 6 7 8 9 10 11 12 13

MADE IN ITALY

# G\_RS

A RACING BOOT SUITABLE FOR TRACK AND STREET. EXCLUSIVE GAERNE FLOATING SYSTEM TO SURROUNDS THE ANKLE WHILE AT THE SAME TIME FLOWS WITH YOUR NATURAL MOVEMENT. HEEL CUP DESIGNED FOR MAXIMUM STRENGTH, WIDE SHIN PLATE IN PU, GEAR LEVEL PROTECTION. INSIDE BREATHABLE LINING AND SHINBONE AREA WITH SPECIAL PADDING FOR EXTRA COMFORT. SIDE-ENTRY SYSTEM WITH ELASTIC ZIP PANEL AND VELCRO FOR CUSTOMIZED FIT. NON-SLIP AND OIL RESISTANT SOLE. CHANGEABLE TOE SLIDERS.



**2452** **G\_RS BLACK/WHITE/YELLOW**  
**004** EU 39 40 41 42 43 44 45 46 47 48 | **US** 6 7 8 9 10 11 12 13

MADE IN ITALY

# G\_RT

A PERFORMANCE AND VERSATILE BOOT SUITABLE FOR SPORTY RIDING! SIDE-ENTRY SYSTEM WITH ELASTIC ZIP PANEL AND VELCRO FOR CUSTOMIZED FIT. HEEL CUP DESIGNED FOR MAXIMUM STRENGTH, FRONT PLATE AND GEAR SUPPORT TO COMPLETE THE TECHNICAL FEATURES. INSIDE BREATHABLE AIRMESH LINING. EXCLUSIVE DUAL COMPOUND AND ANTI-SLIP RUBBER SOLE. REPLACEABLE SLIDERS.



**2453** **G\_RT BLACK**  
**001** EU 39 40 41 42 43 44 45 46 47 48 | **US** 6 7 8 9 10 11 12 13

FOR THE TWO-WHEELED TRAVELLERS WHO GOES WHERE THE ADVENTURE TAKES THEM, THIS BOOT CAN EASILY COPE WITH ALL WEATHER CONDITIONS AND ANY TERRAIN. THIS MADE IN ITALY EXCELLENCE HAS THE UPPER IN FULL GRAIN LEATHER WITH BREATHABLE AND WATERPROOF GORE-TEX PERFORMANCE MEMBRANE. INNOVATIVE ANKLE PIVOT SYSTEM FORMS A FLEXIBLE LINK BETWEEN UPPER BOOT AND LOWER FOOT AREA FOR ADDED CONTROL AND SUPPORT. PU SHIN PLATES REINFORCEMENT, FRAME GRIPPING SUEDE INNER CALF GUARD, ALUMINUM BUCKLE AND VELCRO STRAP FOR CUSTOMIZED FIT. THE LUG-SOLED SOLE TREAD OFFERS A SUPERIOR GRIP ON ANY TERRAIN.



**2529** **G\_DAKAR GORE-TEX® BLACK**  
**001** EU 39 40 41 42 43 44 45 46 47 48 | **US** 6 7 8 9 10 11 12 13



MADE IN ITALY

# G\_DAKAR



**2529** **G\_DAKAR GORE-TEX® BROWN**  
**013** EU 39 40 41 42 43 44 45 46 47 48 | **US** 6 7 8 9 10 11 12 13



Credits Moppefoto







BOOT FOR OVER LONG TRIPS AND OFF-ROAD, THE IDEAL CHOICE FOR SEASONED TRAVELLERS. FULL GRAIN WATERPROOF LEATHER UPPER WITH A LAYER OF SUEDE ON THE INSIDE TO PROTECT THE LEG FROM HEAT. THE CLOSURE SYSTEM USES TWO ALLOY ADJUSTABLE AND INTERCHANGEABLE BUCKLES, AND A STRIP OF VELCRO AT THE TOP ALLOWS TO ADJUST THE CLOSING PERFECTLY, ADAPTING THE BOOT TO THE SHAPE OF THE CALF. THE LINING INSIDE IS GORE-TEX, IN ADDITION TO BEING WATERPROOF, IT ALSO OFFERS EXCELLENT BREATHABILITY. ANTI-SLIP RUBBER GRIP SOLE AND REMOVABLE INSOLE.

MADE IN ITALY

## G\_MIDLAND



**2528** **G\_MIDLAND GORE-TEX® BLACK**  
**001** EU 38 39 40 41 42 43 44 45 46 47 48 US 5 6 7 8 9 10 11 12 13

PREMIUM BOOT DESIGNED FOR ADVENTURE TOURING, DUAL SPORT AND ATV. UPPER IN LEATHER, IT INCORPORATES DRYTECH WATERPROOF MEMBRANE FOR ADVERSE WEATHER CONDITIONS. CLASS-LEADING PROTECTIVE FEATURES, SUCH AS SUEDE HEAT PROTECTION, NEW FRONTAL SHIELD, HIGHLIGHTED MALLEOLUS PROTECTIONS WITH EMBOSSED GRAPHIC MOTIFS, GEAR-SHIFT PROTECTOR. HI-VISIBILITY INSERTS FOR SAFETY. CLOSURE SYSTEM INCLUDES THREE BUCKLES WITH GRAPHIC DETAILS FOR PRECISE CLOSURE. EXCLUSIVE VULCANIZED RUBBER SOLE FOR OPTIMUM GRIP AND CONTROL ON THE BIKE AS WELL AS FOR WALKING



<b>2542</b>	G_ADVENTURE AQUATECH BLACK
<b>001</b>	EU 38 39 40 41 42 43 44 45 46 47 48   US 5 6 7 8 9 10 11 12 13



MADE IN ITALY

# G\_ADVENTURE



<b>2542</b>	G_ADVENTURE AQUATECH BLACK/FOREST
<b>010</b>	EU 38 39 40 41 42 43 44 45 46 47 48   US 5 6 7 8 9 10 11 12 13



MADE IN ITALY

# G\_DUNE

FOR THOSE MOTORCYCLISTS WHO PREFER MID BOOTS FOR THEIR ADVENTURE AND TOURING RIDES. THIS BOOT DELIVERS EXCEPTIONAL PROTECTION AND RIDING FEEL, REFINED DETAILS SUCH AS UPPER ON LEATHER, BREATHABLE AND WATERPROOF DRYTECH MEMBRANE MAKING IT PERFECT FOR ADVENTURE TOURING OR OFF-ROAD EXPLORATION IN ALL WEATHER CONDITIONS AND CLIMATES. SHIFTING PROTECTOR, MALLEOLOUS REINFORCEMENT, TWO REPLACEABLE BUCKLES AND A WIDE VELCRO STRAP ON THE TOP TO KEEP THE BOOTS SECURELY ON FOOT, THE COMPACT DESIGN IS STUDIED TO FIT EFFORTLESSLY UNDER ANY PANTS. REFLEX INSERT FOR SAFETY AND A VERY EFFICIENT AND DURABLE LUG SOLE CAPABLE OF TACKLING ANY TERRAIN GROUND.



<b>2543</b>	G_DUNE AQUATECH BROWN
<b>013</b>	EU 38 39 40 41 42 43 44 45 46 47 48   US 5 6 7 8 9 10 11 12 13



<b>2543</b>	G_DUNE AQUATECH BLACK
<b>001</b>	EU 38 39 40 41 42 43 44 45 46 47 48   US 5 6 7 8 9 10 11 12 13





MADE IN ITALY

## G\_ESCAPE

THIS BOOT OFFERS AN IMPRESSIVE COMBINATION OF LIGHTNESS AND COMFORT, THE GORE-TEX EXTENDED COMFORT FOOTWEAR MEMBRANE GRANTS WATERPROOFING AND BREATHABILITY. THE UPPER IS IN MICROFIBER AND CORDURA COMBINED WITH PU REINFORCEMENTS ON MALLEOLUS AREA AND INTERNAL SHIN PLATE, REFLEX DETAILS ON THE BACK. THE SIDE-ENTRY SYSTEM WITH ELASTIC ZIP PANEL AND VELCRO FOR CUSTOMIZED FIT. CUSHIONING RUBBER EVA SOLE MAKE IT IDEAL FOR EVERY DAY USE.



**2449 G\_ESCAPE GORE-TEX® BLACK**  
**001** EU 37 38 39 40 41 42 43 44 45 46 47 48 | US 4 5 6 7 8 9 10 11 12 13

GORE-TEX Extended Comfort Footwear for increased breathability

MADE IN ITALY

## G\_ASPEN

COMFORTABLE AND DURABLE OVER LONG TRIPS, BUT ALSO GREAT AS AN EVERYDAY RIDING BOOT. PREMIUM FULL GRAIN LEATHER AND GORETEX MEMBRANE FOR WATERPROOF AND BREATHABILITY. REFLEX INSERTS ON THE FRONT AND REAR SIDE FOR IMPROVED VISIBILITY. INTERNAL SHIN PLATE, MALLEOLUS REINFORCEMENT WITH RIGID SHELL AND PU REINFORCED SHIFT PAD. SIDE-ENTRY SYSTEM WITH ELASTIC ZIP PANEL AND VELCRO FOR CUSTOMIZED FIT. THE EXCLUSIVE RUBBER SOLE DESIGN HAS SPECIFIC GRIP AREA FOR MAXIMUM STABILITY AND GRIP. MADE IN ITALY FOR SUPERIOR QUALITY!



**2447 G\_ASPEN GORE-TEX® BLACK**  
**001** EU 37 38 39 40 41 42 43 44 45 46 47 48 | US 4 5 6 7 8 9 10 11 12 13



MADE IN ITALY

## G\_VENTO

A PREMIUM MADE IN ITALY TOURING BOOT DESIGNED FOR HOT CONDITIONS. THE UPPER COMBINES CORDURA PLUS LEATHER AND THE GORE-TEX EXTENDED COMFORT FOOTWEAR MEMBRANE OFFERS SUPERIOR BREATHABILITY AND ABSOLUTE WATERPROOFNESS. MALLEOLUS REINFORCEMENT, GEAR PROTECTION, ELASTIC ZIPPER AND VELCRO FOR A CUSTOMIZED FIT. REFLEX INSERT FOR BETTER VISIBILITY EVEN IN POOR CONDITIONS. RUBBER TOURING SOLE DESIGNED WITH SPECIFIC GRIP AREAS.



**2441** **G\_VENTO GORE-TEX® BLACK**  
**001** EU 37 38 39 40 41 42 43 44 45 46 47 48 | US 4 5 6 7 8 9 10 11 12 13

GORE-TEX Extended Comfort Footwear for increased breathability

MADE IN ITALY

## G\_YUMA

THE G\_YUMA IS A MADE IN ITALY TOURING BOOT. THE LEATHER UPPER AND CORDURA INSERTS TO PROVIDE EXCELLENT LEVELS OF MOVEMENT AND COMFORT, ALONG WITH A DRYTECH WATERPROOF MEMBRANE. INTERNAL SHIN GUARD PLATE, MALLEOLUS REINFORCEMENTS, GEAR PROTECTION AND REFLEX INSERT COMPLETE THE RANGE OF PROTECTIVE FEATURES. SIDE-ENTRY SYSTEM WITH ELASTIC ZIP PANEL AND VELCRO FOR CUSTOMIZED FIT. RUBBER SOLE DESIGNED FOR EXCELLENT GRIP AND STABILITY.



**2448** **G\_YUMA AQUATECH BLACK**  
**001** EU 37 38 39 40 41 42 43 44 45 46 47 48 | US 4 5 6 7 8 9 10 11 12 13

GORE-TEX Extended Comfort Footwear for increased breathability



MADE IN ITALY

# CAFE' RACER

THE CAFÈ RACER G\_STONE BOOTS HAVE EXCLUSIVE VINTAGE STYLE TO COMPLEMENT YOUR LOOK OF A REAL RACER! DESIGNED FOR TRUE ROCKERS, THEY ARE BUILT IN SOFT, FULL-GRAIN LEATHER, THE INTERNAL GORE-TEX LINING GRANTS WATERPROOF AND BREATHABLE. THEY FEATURE A ZIP CLOSURE AND LATERAL VELCRO FASTENERS AND LACES AT THE FRONT FOR PERSONALIZED ADJUSTMENT. MALLEOLUS AND GEAR REINFORCEMENTS, PADDED COLLAR IN SOFT LEATHER. THE SOLE WITH DOTTED TREAD GUARANTEES MAXIMUM GRIP ON ALL TYPES OF TERRAIN.



**2439** G\_STONE GORE-TEX® BLACK  
**001** EU 41 42 43 44 45 46 47 US 7 8 9 10 11 12

GORE-TEX Extended Comfort Footwear for increased breathability



**2439** G\_STONE GORE-TEX® BROWN  
**013** EU 41 42 43 44 45 46 47 US 7 8 9 10 11 12

GORE-TEX Extended Comfort Footwear for increased breathability





**2443 G\_ROCKET BLACK**  
**001** EU 37 38 39 40 41 42 43 44 45 46 47 48 | US 4 5 6 7 8 9 10 11 12 13



MADE IN ITALY

## G\_ROCKET

IT HAS BEEN DESIGNED FOR SPORT-RACING, YET COMFORTABLE OFF THE BIKE AS WELL. LATERAL AIR VENT PERFORATION TO IMPROVE INSIDE VENTILATION AND COMFORT. IT INCORPORATES HIGH PROTECTIVE FEATURES, SUCH AS MALLEOLUS REINFORCEMENT, SHIFT PAD AND EXCLUSIVE COMPOUND RUBBER SOLE TOP PROVIDE EXCELLENT GRIP. G\_ROCKET IS ALSO AVAILABLE WITH GORE-TEX EXTENDED MEMBRANE FOR INCREASED BREATHABILITY

MADE IN ITALY

## G\_RAZOR

A COMFORTABLE SPORT SHOE, LIGHTWEIGHT AND STREET-STYLED UPPER COMBINES SUEDE AND TECHNICAL FABRIC. SOFT PADS ON ANKLE AREA. LACES FOR EASY CLOSURE AND COMFORTABLE FIT. THE LACE LOOP HOLDER ON LATERAL SIDE KEEPS SAFELY SECURED THE CLOSURE. THE GORE-TEX EXTENDED MEMBRANE GRANTS INCREASED BREATHABILITY WHILE THE NEWLY DESIGNED RUBBER SOLE PROVIDES EXCELLENT GRIP ON AND OFF THE BIKE.



**2446 G\_ROCKET GORE-TEX BLACK**  
**001** EU 39 40 41 42 43 44 45 46 47 48 | US 6 7 8 9 10 11 12 13

GORE-TEX Extended Comfort Footwear for increased breathability



**2445 G\_RAZOR GORE-TEX BLACK**  
**001** EU 37 38 39 40 41 42 43 44 45 46 47 48 | US 4 5 6 7 8 9 10 11 12 13

GORE-TEX Extended Comfort Footwear for increased breathability



**2968** G\_RUE AQUATECH BLACK  
**001** EU 39 40 41 42 43 44 45 46 | US 5,5 6,5 7 8 9 9,5 10,5 11



**2968** G\_RUE AQUATECH OCEAN BLUE  
**003** EU 39 40 41 42 43 44 45 46 | US 5,5 6,5 7 8 9 9,5 10,5 11

## G\_RUE

IS THE MOST STYLISH OPTION FOR ANY URBAN RIDER AND SPORTIVE MOTORCYCLING USER. MAIN UPPER IN TECHNICAL FABRIC WITH SUEDE INSERTS. DRYTECH® MEMBRANE 100% WATERPROOF FOR EFFECTIVE WET WEATHER PERFORMANCE. MALLEOLUS REINFORCEMENT ON BOTH THE SIDES, LACES CLOSURE, HIGH SOLE WITH SUPERLIGHT INSOLE FOR GRIP AND DURABILITY.



**2968** G\_RUE AQUATECH ANTHRACITE  
**014** EU 39 40 41 42 43 44 45 46 | US 5,5 6,5 7 8 9 9,5 10,5 11





**2972 G\_ROME GORE-TEX® WHITE**  
**004** EU 37 38 39 40 41 42 43 44 45 46 47 | US 4 5 5,5 6,5 7 8 9 9,5 10,5 11 12

GORE-TEX Extended Comfort Footwear for increased breathability



**2972 G\_ROME GORE-TEX® BLACK**  
**001** EU 37 38 39 40 41 42 43 44 45 46 47 | US 4 5 5,5 6,5 7 8 9 9,5 10,5 11 12

GORE-TEX Extended Comfort Footwear for increased breathability



**2972 G\_ROME GORE-TEX® GRAY**  
**007** EU 37 38 39 40 41 42 43 44 45 46 47 | US 4 5 5,5 6,5 7 8 9 9,5 10,5 11 12

GORE-TEX Extended Comfort Footwear for increased breathability

# G\_ROME

G\_ROME COMBINE STYLE AND SAFETY, FOR THE DESIGN GAERNE WAS INSPIRED BY THE WORLD OF FASHION WHILE AS REGARDS THE TECHNICAL ASPECT , THEY ARE EQUIPPED WITH PROTECTION IN THE ANKLES AREA, REINFORCEMENTS IN THE HEEL AND ON THE SHIFT PAD. THE RUBBER SOLE IS NON-SLIP AND LOCKING SYSTEM MAKES USE OF LACES AND EXTERNAL ZIP.



**2973 G.ROME OILED AQUATECH BROWN**  
**013** EU 37 38 39 40 41 42 43 44 45 46 47 | US 4 5 5,5 6,5 7 8 9 9,5 10,5 11 12

GORE-TEX Extended Comfort Footwear for increased breathability



**2966** **G\_MARAIS AQUATECH BLACK**  
**001** EU 37 38 39 40 41 42 43 44 45 46 47 | **US** 4 5 5,5 6,5 7 8 9 9,5 10,5 11 12



**2966** **G\_MARAIS AQUATECH BROWN**  
**013** EU 37 38 39 40 41 42 43 44 45 46 47 | **US** 4 5 5,5 6,5 7 8 9 9,5 10,5 11 12

# G\_MARAIS

AN EXCELLENT ADDITION TO THE GAERNE URBAN COLLECTION. FASHION STYLE AND ALL DAY COMFORT, THIS SNEAKER CAN BE ALSO WORN CASUALLY FOR OFF BIKE URBAN ACTIVITIES, MAIN UPPER IN FULL GRAIN LEATHER WITH DRYTECH® MEMBRANE 100% WATERPROOF. A RANGE OF PROTECTIVE FEATURES AS MEALLOLUS REINFORCEMENT ON BOTH SIDES, REINFORCED INSERT ON SIDE AND CLOSURE SYSTEM WITH LACES. EXCLUSIVE OIL-RESISTANT RUBBER COMPOUND SOLE.



**2966** **G\_MARAIS AQUATECH WHITE**  
**004** EU 37 38 39 40 41 42 43 44 45 46 47 | **US** 4 5 5,5 6,5 7 8 9 9,5 10,5 11 12



Credits Soli/Moto



G.ROME: URBAN INSPIRED SHOES FOR LADIES, DESIGNED WITH THE COMFORT OF SNEAKER AND THE PROTECTION OF MOTOR-CYCLE BOOTS. GORETEX MEMBRANE FOR WATERPROOF AND BREATHABILITY.

## G\_ROME LADY



<b>2972</b>	<b>G.ROME GORE-TEX BLACK</b>
<b>001</b>	EU 36 37 38 39 40 41 42   US 3-4-5-5,5-6,5-7-8

MADE IN ITALY

## BLACK ROSE

BLACK ROSE IS MADE OF FULL GRAIN LEATHER ON THE UPPER PART AND ELASTIC CORDURA INSERTS. WATERPROOF AND BREATHABLE GORETEX MEMBRANE. A PRO-TECH ANKLE SHIELD SYSTEM IN THE ANKLE AREA AND AN EASY-ON SIDE CLOSURE.



<b>2432</b>	<b>BLACK ROSE GORE-TEX® BLACK</b>
<b>001</b>	EU 35 36 37 38 39 40 41 42   US 5 6 7 7,5 8 9,5 10



BOA | L6 | 

**4904** G\_VOLT ANTHRACITE  
**014** EU 38 39 40 41 42 43 44 45 46 47 US 5 5,5 6,5 7 8 9 9,5 10,5 11 12



BOA | L6 | 

**4904** G\_VOLT SUMMER GREY  
**013** EU 38 39 40 41 42 43 44 45 46 47 US 5 5,5 6,5 7 8 9 9,5 10,5 11 12

MADE IN ITALY

# G\_VOLT

G\_VOLT SHOES COMBINE STYLE AND COMFORT , IT IS IDEALLY SUITED FOR FREE TIME. AN ABRASION RESISTANT VENTILATED UPPER AND GRIPPY AND DURABLE RUBBER OUTSOLE. THE COMBINATION PROVIDES SUPREME COMFORT IN ADDITIONAL TO A GOOD GRIP WHEN YOU'RE WALKING AROUND. CLOSURE SYSTEM WITH BOA L6 REELS TO GRANT A UNIFORM MANNER, ENSURING A CONSTANT HOLDING, WITHOUT ANY PRESSURE POINT AND AN EASY AND SPEED CLOSURE.



BOA | L6 |  

**4905** G\_VOLT VIBRAM SOLE ANTHRACITE  
**014** EU 38 39 40 41 42 43 44 45 46 47 US 5 5,5 6,5 7 8 9 9,5 10,5 11 12



4818-001  
SINGLE BANNER ( 300x80 cm)

4819-001  
ROLL BANNER (30 mt X 80 cm)



4189-001  
G.KEY HOLDER



6001-002  
G.LOGO MEDIUM STICKER

6001-001  
G.LOGO BIG STICKER



4373-001  
G.BRAND SIGN  
(19,8 X 65,5 Cm)



4352-001  
G.MOTORCYCLE SHELF  
(33 x 13 cm)



4191-001  
G. DEALER STICKER  
( 27,5 x 15,8 cm )



4365-001  
SG.12 BOOT TALKER ENGLISH  
4365-002  
SG.12 BOOT TALKER ITALIAN  
4365-003  
SG.12 BOOT TALKER GERMAN  
4365-004  
SG.12 BOOT TALKER FRENCH  
4365-005  
SG.12 BOOT TALKER SPANISH



4368-001  
GX1 BOOT TALKER ENGLISH  
4368-002  
GX1 BOOT TALKER ITALIAN  
4368-003  
GX1 BOOT TALKER GERMAN  
4368-004  
GX1 BOOT TALKER FRENCH  
4368-005  
GX1 BOOT TALKER SPANISH

4367- 001  
G.SHOP BAG  
(60x14x42 cm)

4348-009  
G.SHOP BAG  
(36x12x40 cm)



4185-001  
G-CHAIR



4186-001  
G.CARPET



4354-001  
G.WALL MOUNTED SHOWCASE  
120 X 240 CM.

4354-001  
G.WALL MOUNTED SHOWCASE  
(120x240 cm)



P.O.P.



4398-003  
G.DAZLE FLEECE ZIP ANTHRACITE  
SIZE :XS-S-M-L-XL-XXL



4392-004  
G.BOOT CO. T-SHIRT WHITE  
SIZE : S-M-L-XL-XXL



4393-004  
G.BOOT CO. T-SHIRT LADY WHITE  
SIZE : XS-S-M-L-XL

## G.LIFESTYLE MAN



4871-001  
G.BOOT BAG BLACK



4396-004  
G.DAZLE CO. T-SHIRT WHITE  
SIZE : S-M-L-XL-XXL



4394-007  
G.DUDE T-SHIRT GRAY  
SIZE : S-M-L-XL-XXL



4394-009  
G.DUDE T-SHIRT YELLOW  
SIZE : S-M-L-XL-XXL



4209-007  
G.POLO 1962 MEN GREY YELLOW  
SIZE : S-M-L-XL-XXL

## G.LIFESTYLE WOMAN



4395-007  
G.DUDE T-SHIRT LADY GRAY  
SIZE : XS-S-M-L-XL



4395-009  
G.DUDE T-SHIRT LADY YELLOW  
SIZE : XS-S-M-L-XL



4401-007  
G.TRUCKER GREY GREY



4350-001  
G-HAT BLACK



4402-001  
G.BASEBALL GREY BLACK



4206-001  
SHORT SOCKS

4207-001  
LONG SOCKS



4397-004  
G.DAZLE CO. T-SHIRT LADY WHITE  
SIZE : XS-S-M-L-XL



4210-007  
G.POLO 1962 WOMAN GREY YELLOW  
SIZE : XS-S-M-L-XL



4760-001  
KIT BUCKLE SG22 /  
BALANCE XTR BLACK



4760-004  
KIT BUCKLE SG22 /  
BALANCE XTR WHITE



4760-005  
KIT BUCKLE SG22 /  
BALANCE XTR RED



4693-001  
BUCKLE SG.12  
B.OILED/CLASSIC BLACK  
(1 buckle + 1 screw)



4693-004  
BUCKLE SG.12  
B.OILED/CLASSIC WHITE  
(1 buckle + 1 screw)



4694-011  
BUCKLE G.DAKAR/  
G.FASTBACK MATT BLACK  
(1 buckle + 1 screw)



4752-001  
BUCKLE GX-J  
(1 Left 1 right + 4 screws)

4694-001  
BUCKLE SG.10/FASTBACK  
G.REACT/GX1/G.PROT (1  
buckle + 1 screw)

# SPARE PARTS



4651-001  
KIT FUSSBETT G.REACT  
+ GX1 + FASTBACK + SG.10  
size 37/49



4754-001  
KIT FUSSBETT ERGO  
size 39/48



4697-001  
KIT FUSSBETT SG12-GP1  
size 39/48



4623-005  
G.SUPERCROSS  
SG22 BLACK/RED (1Pair)



4623-007  
G.SUPERCROSS SG22  
BLACK/GREY (1Pair)



4673-001  
VSM SUPERMOTARD SOLE  
(1 pair)



4622-001  
ENDURO SOLE BLACK  
(1 pair)



4696-004  
GAERNE SG.12 SOLE WHITE/BLACK  
(1 pair)



4604-001  
GAERNE TRIAL SOLE (1 pair)



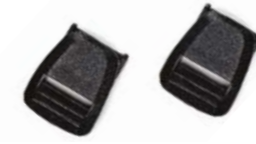
4603-003  
GAERNE SUPERCROSS  
BLACK WHITE (1 pair)



4603-002  
GAERNE SUPERCROSS  
BLACK (1 pair)



4699-001  
ALUMINIUM ANKLE  
PROTECTION SG.12 (1 pair)



4667-001  
KIT STRAPS HOLD BLACK



4674-001  
VSM KIT RUBBER SLIDER



4674-002  
VSM KIT PLASTIC SLIDER

4667-002  
KIT STRAPS HOLD GREY



4646-001  
FOUR SHORT STRAPS BLACK



4668-001  
FOUR MEDIUM STRAPS BLACK



4645-001  
FOUR LONG STRAPS BLACK



4505-004  
FOUR SHORT STRAP GX-J / SG J  
WHITE

4646-002  
FOUR SHORT STRAPS WHITE

4668-002  
FOUR MEDIUM STRAPS WHITE

4683-001  
FOUR EXTRA LONG STRAPS BLACK

4505-001  
FOUR SHORT STRAP GX-J / SG J  
BLACK



4504-004  
FOUR LONG STRAP GX-J / SG J  
WHITE



4504-001  
FOUR LONG STRAP GX-J / SG J  
BLACK



4675-001  
KIT BUCKLE G.ADVENTURE



4665-001  
SG10 STRAPS BLACK

4703-001  
FOUR EXTRA LONG STRAP  
GX-J / SG J

4503-004  
KIT BUCKLE SG.J WHITE

4503-001  
KIT BUCKLE SG.J BLACK

4665-002  
SG10 STRAPS WHITE



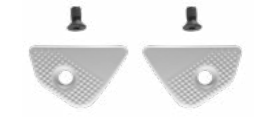
4758-005 FOUR LONG STRAPS  
SG22 / BALANCE XTR RED



4759-001 FOUR SHORT STRAPS  
SG22 / BALANCE XTR BLACK



4763-001  
ALUMINIUM ANKLE  
PROTECTION SG22 BLACK



4763-004  
ALUMINIUM ANKLE  
PROTECTION SG22 WHITE

4758-004 FOUR LONG STRAPS  
SG22 / BALANCE XTR WHITE

4759-004 FOUR SHORT STRAPS  
SG22 / BALANCE XTR WHITE

4759-005 FOUR SHORT STRAPS  
SG22 / BALANCE XTR RED



4511-002  
FRONT SLIDER GP1 (1 pair)



4510-001  
MAGNESIUM HEEL  
PROT. GP1



4509-001  
MAGNESIUM TOE  
SLIDER G.P1



4512-001  
PLASTIC TOE SLIDER  
G.RW-GRS-GRT



4698-001  
KIT STEEL TOE SG12



4679-001  
KIT STEEL TOE



4757-001  
KIT STEEL TOE SG22



4822-001  
WATERPROOF POLISH  
100 ML