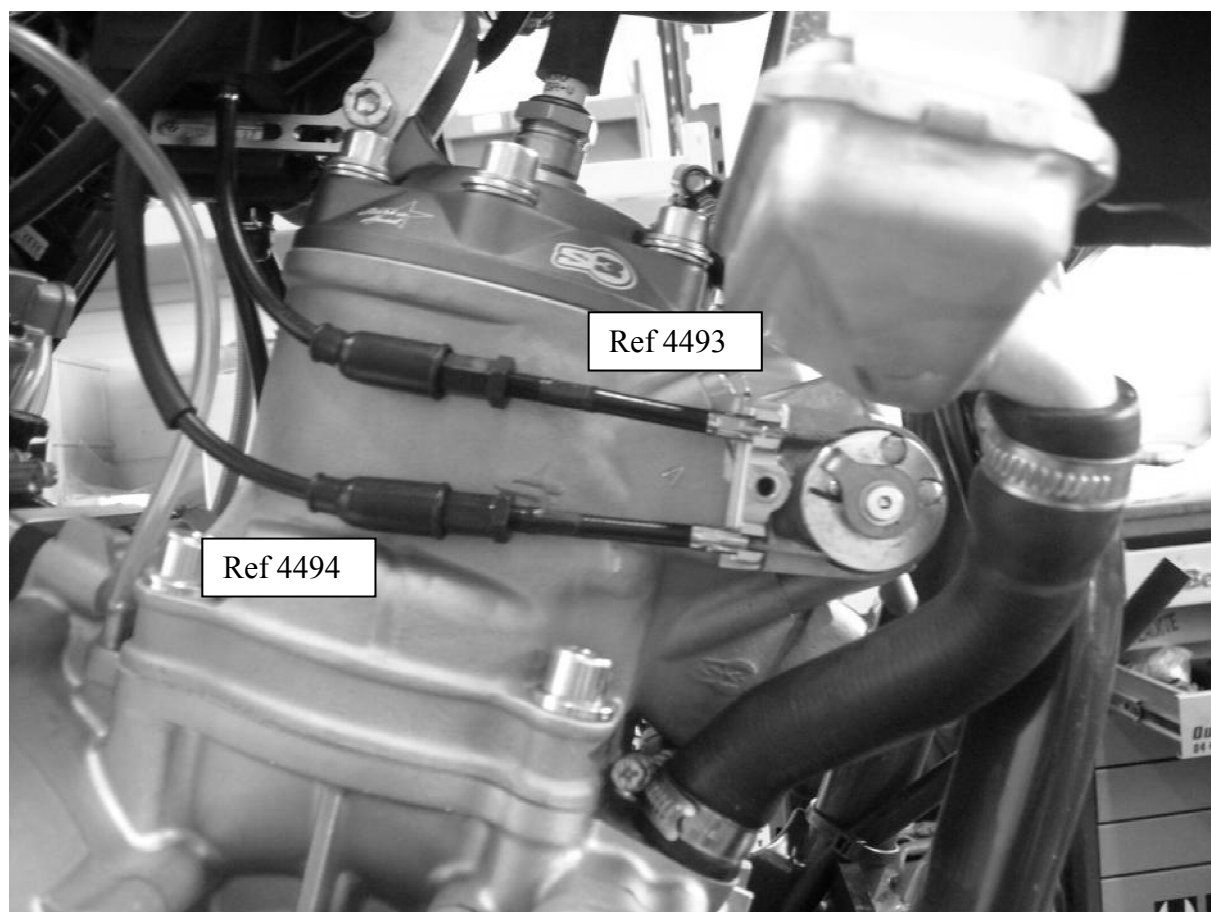

	<b>Information technique</b> <b>Technical information</b> <b>Información técnica</b>	<b>Document n°</b> <b>NT 75-01</b>
<b>Sujet:</b> <b>Subject: Adjusting the tension of the valve cables</b> <b>Asunto:</b>	<b>Date/Fecha</b> <b>16/05/2014</b>	

Motocyclette/Motorcycle/Motocicleta				
50 2T	125 4T	250/300 4T	250/300 2T	450/510 4T

This technical note is intended to show how to perform, as accurately as possible, the adjustment of the tension of the valve cables, in order to ensure the optimum performance and maximum driving satisfaction of the motor.




	<b>Information technique</b> <b>Technical information</b> <b>Información técnica</b>	<b>Document n°</b> <b>NT 75-01</b>
<b>Sujet:</b> <b>Subject: Adjusting the tension of the valve cables</b> <b>Asunto:</b>	<b>Date/Fecha</b> <b>16/05/2014</b>	

**Procedure:**

- Make sure that the tensioning cables are completely relaxed.
  
- Adjust the top position on the 4493 cable pulley at the stop located on the cylinder. For the present time do not adjust the lower 4494 cable.
  
- Turn the bike ignition switch ON.  
Wait until the electric motor initializes the valves and then shuts down.  
Turn the bike ignition switch OFF.
  
- Start adjusting the upper cable tensioner 4493 by unscrewing the nut 8 from the sleeve stop.

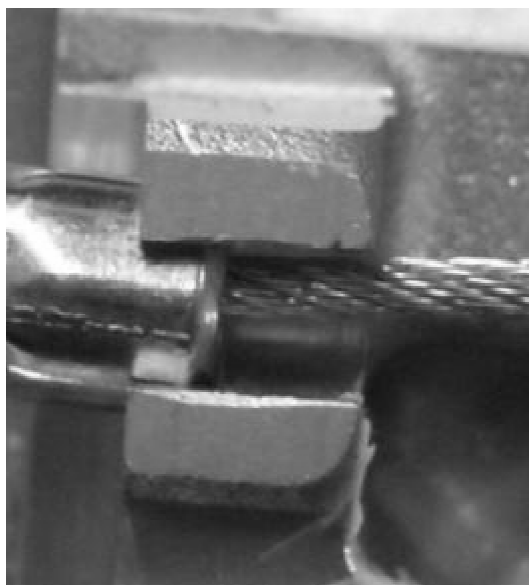
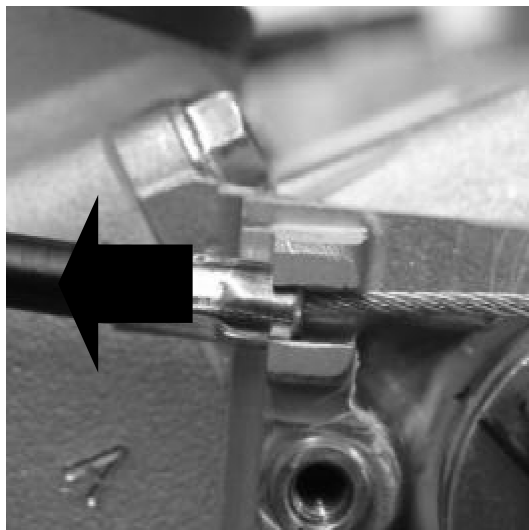


	<b>Information technique</b> <b>Technical information</b> <b>Información técnica</b>	<b>Document n°</b> <b>NT 75-01</b>
<b>Sujet:</b> <b>Subject: Adjusting the tension of the valve cables</b> <b>Asunto:</b>	<b>Date/Fecha</b> <b>16/05/2014</b>	




**Do not continue to tighten the cable, tighten only until the stop is no longer pulling (WITH FORCE) attempting to move the sheath toward the rear of the bike, stop adjusting at this time**

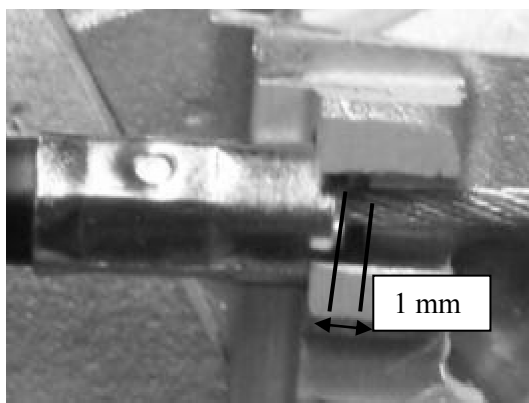
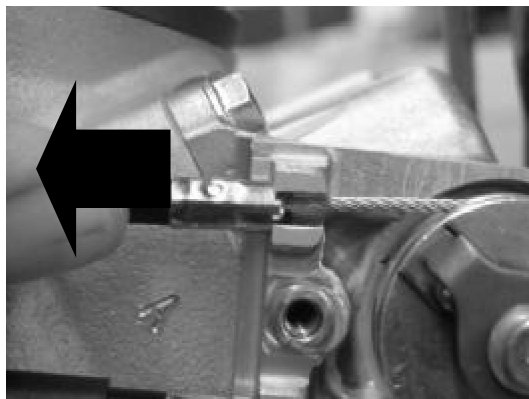
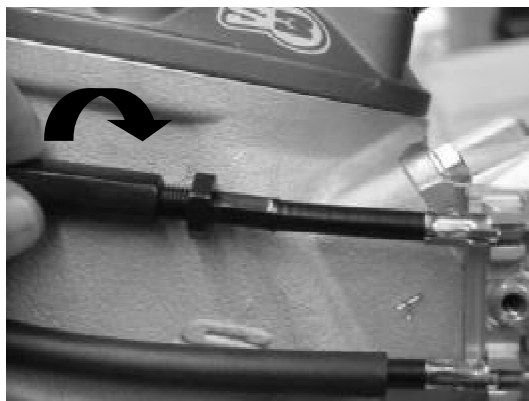
-Note: In this configuration, the central valves must be fully lowered.



**STOPPING ADJUSTING  
WHEN THERE IS ZERO PLAY  
AT THE SHEATH STOP**

	<b>Information technique</b> <b>Technical information</b> <b>Información técnica</b>	<b>Document n°</b> <b>NT 75-01</b>
<b>Sujet:</b> <b>Subject: Adjusting the tension of the valve cables</b> <b>Asunto:</b>	<b>Date/Fecha</b> <b>16/05/2014</b>	

- Then tighten the nut 8, 1 full turn = 1mm
- The measurement between the tensioning cable crimping sleeve and bottom of the cylinder sheath should be 0.5 mm minimum, 1mm maximum when pulling (WITH FORCE) on the cable to the rear of the bike, if this measurement is not correct, correct by tightening or loosening the nut 8.





**Information technique**  
**Technical information**  
**Información técnica**

**Document n°**  
**NT 75-01**

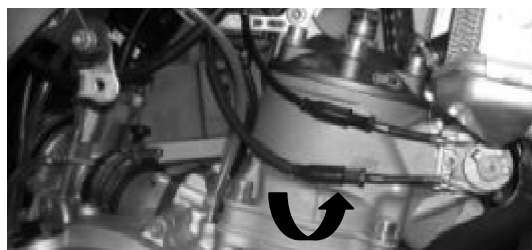
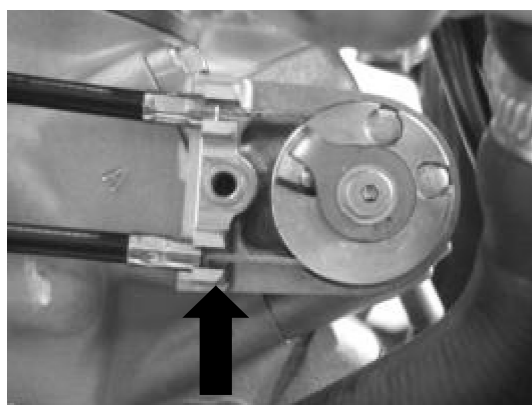
**Sujet:**  
**Subject: Adjusting the tension of the valve cables**  
**Asunto:**

**Date/Fecha**  
**16/05/2014**

- Tighten the nut 10 against the stop.

- Insert the lower cable-4494 into the cable stop on the cylinder.

- Start adjusting the lower cable tensioner 4494 by unscrewing the nut 8 until it abuts on the sleeve stop.





Information technique  
Technical information  
Información técnica

Document n°  
NT 75-01

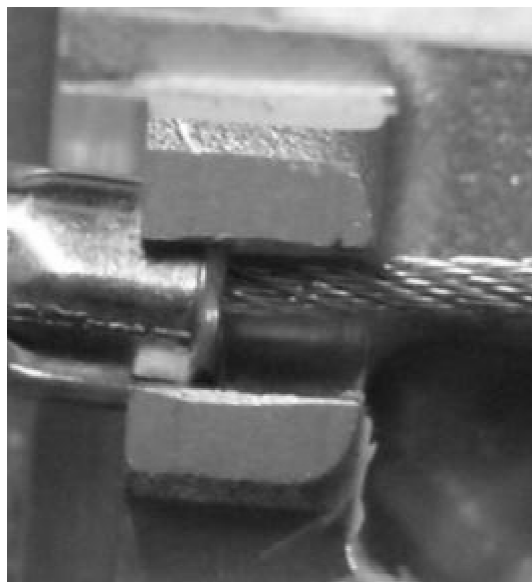
**Sujet:**  
**Subject:** Adjusting the tension of the valve cables  
**Asunto:**

**Date/Fecha**  
**16/05/2014**

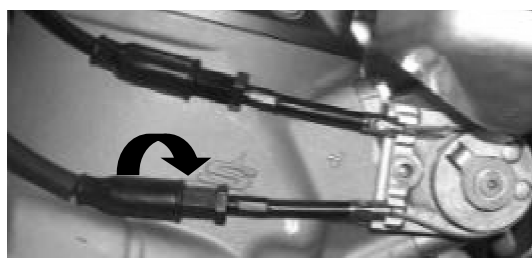


Do not continue to tighten the cable, tighten only until the stop is no longer pulling (WITH FORCE) attempting to move the sheath toward the rear of the bike, stop adjusting at this time

- Tighten the nut then 8, 1 full turn = 1mm



STOPPING ADJUSTING  
WHEN THERE IS ZERO PLAY  
AT THE SHEATH STOP





**Information technique**  
**Technical information**  
**Información técnica**

**Document n°**  
**NT 75-01**

**Sujet:**

**Subject: Adjusting the tension of the valve cables**

**Asunto:**

**Date/Fecha**  
**16/05/2014**

- The measurement between the tensioning cable crimping sleeve and bottom of the cylinder sheath should be 0.5 mm minimum, 1mm maximum when pulling (WITH FORCE) on the cable to the rear of the bike, if this measurement is not correct, correct by tightening or loosening the nut 8.

- Tighten the nut 10 against the stop.  
- Lubricate with spray grease the cables on the pulley, the pulley groove and the steel plate to prevent oxidation.

