

SHERCO

2019 LAUNCH



**THE FASTEST
GROWING
COMPANY IN
THE OFF-
ROAD
MOTORCYCLE
INDUSTRY**

SHERCO

II. PRODUCT RANGE

☐ ENDURO RANGE : SE

- ☐ Racing : All the year not limited
- ☐ Factory : All the year limited (125 January 2019)

☐ CROSS COUNTRY: SC

- ☐ Factory : All the year limited

☐ LEISURE : SL

- ☐ TY : All the year not limited

☐ TRIAL : ST

- ☐ Racing : All the year not limited
- ☐ Factory : All the year limited

☐ SPECIFIC RACE PRODUCT

- ☐ Baja Edition

ENDURO



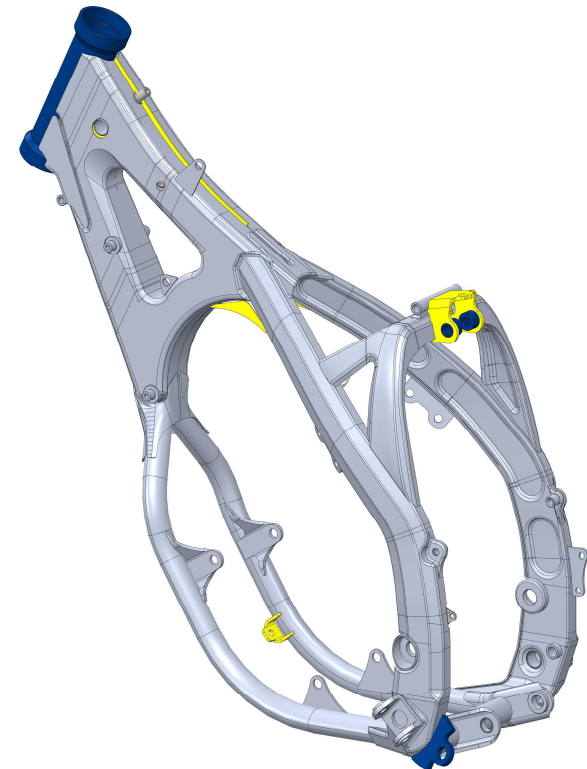
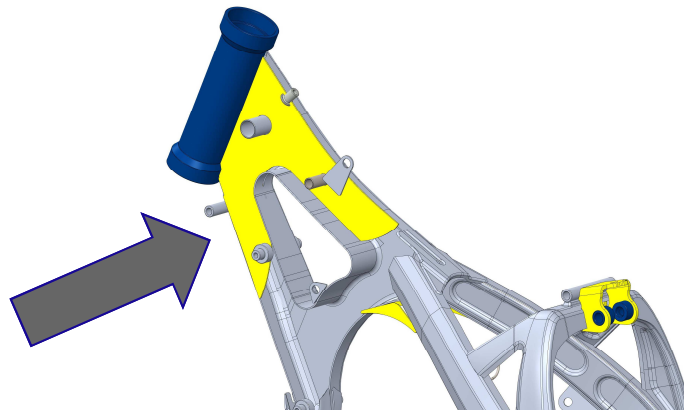
SHERCO

ENDURO

❑ ALL SE CYCLE PARTS

❑ Evolution of the frame structure:

- ❑ Chassis flexibility added
- ❑ Less impact felt in the hands
- ❑ Better handlebar control of the front wheel
- ❑ Chassis weight reduced by 400 grams



ENDURO

❑ ALL SE CYCLE PARTS

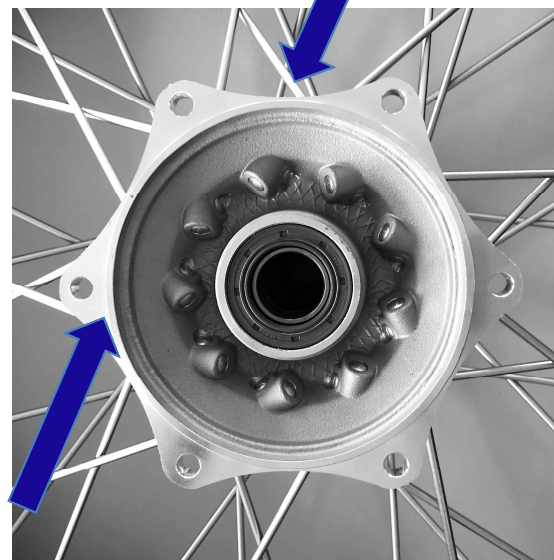
- ❑ Triple clamps lightened - 90 grams
- ❑ Specific engraving



ENDURO

❑ ALL SE CYCLE PARTS

❑ Rear hub reinforcement



ENDURO

☐ ALL SE CYCLE PARTS

☐ Excel rims

☐ Tyres

- ☐ Michelin Rear 70R R TT PLUS - 200 grams
- ☐ Michelin Rear 54R F TT



ENDURO

- ❑ ALL SE CYCLE PARTS

- ❑ Evolution of plastics

- ❑ New graphics on the plastic

- ❑ Reinforcement of the rear fender: length, diameter of the fastners, and the support system



ENDURO

- ❑ ALL SE CYCLE PARTS

- ❑ New regulator

- ❑ More powerful and with an increased cooling capacity



ENDURO

☐ ALL SE CYCLE PARTS 2T

☐ New larger radiator

- ☐ Cooling surface optimized from 120mm to 130mm + 10mm
- ☐ New cooling water lines

☐ New wiring harness

- ☐ Routing optimized through the frame
- ☐ Improved flexibility and additional protection against tearing

☐ New rubber intake manifold + metal clamp

☐ New FMF exhaust pipe

- ☐ Routing optimized through the frame
- ☐ Improved exposure protection

☐ New rubber hose exhaust tube connector

- ☐ Better durability and guaranteed perfect sealing between exhaust tube and silencer

ENDURO RACING



SHERCO

ENDURO RACING

☐ SE RACING SPECIFIC CYCLE PARTS

- ☐ WP XPLOR fork
- ☐ WP rear shock absorber
- ☐ No skid plate
- ☐ No expansion vase on 2T
- ☐ Standard exhaust system



ENDURO FACTORY



SHERCO

ENDURO FACTORY

☐ SE FACTORY SPECIFIC CYCLE PARTS

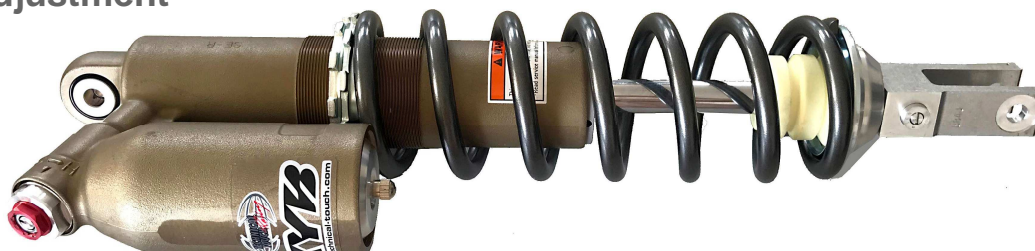
☐ KYB fork

- ☐ Double closed cartridge with hydraulic setting and fork springs specific to each model



☐ KYB shock absorber

- ☐ With hydraulic setting and spring setting specific to each model
- ☐ Lower shaft with light weight self-locking steel nut
- ☐ 3-way adjustment



ENDURO FACTORY

❑ SE FACTORY SPECIFIC CYCLE PARTS

❑ EXCEL blue rims, front and rear

❑ Galfer racing brake discs

❑ Dual-Material sprocket



ENDURO FACTORY

❑ SE FACTORY SPECIFIC CYCLE PARTS

- ❑ Lightweight AXP skid plate
- ❑ New fixing system - 250 grams



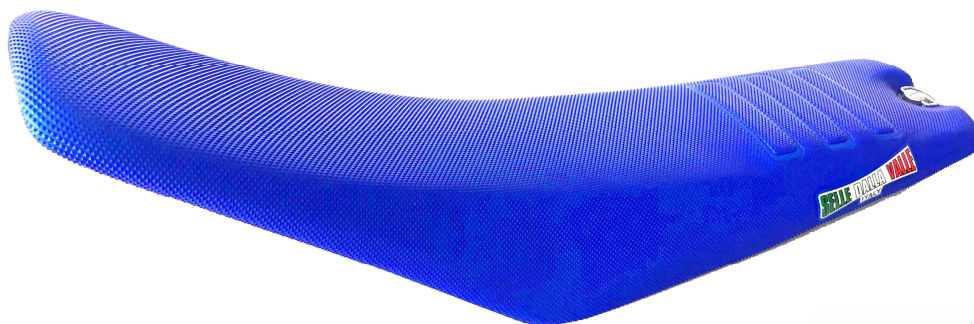
ENDURO FACTORY

☐ SE FACTORY SPECIFIC CYCLE PARTS

☐ Neken handlebar pad

☐ New graphics

☐ New saddle cover material



☐ Dual color Domino grips



ENDURO FACTORY

- ☐ SE FACTORY SPECIFIC CYCLE PARTS
 - ☐ Fan kit
 - ☐ Akrapovic & Fmf full exhaust line
 - ☐ LITHIUM ION SHIDO Battery : - 1300 grams



- ☐ Redesigned battery hold down - 100 grams



CROSS-COUNTRY FACTORY



SHERCO

CROSS-COUNTRY FACTORY

☐ SC FACTORY SPECIFIC CYCLE PARTS

- ☐ Same evolutions as the FACTORY model
- ☐ TRAIL TECH fan
- ☐ CROSS number plate
- ☐ DUNLOP Geomax tyres



- ☐ No lights
- ☐ Harder suspension settings

ENGINE 125 2T



SHERCO

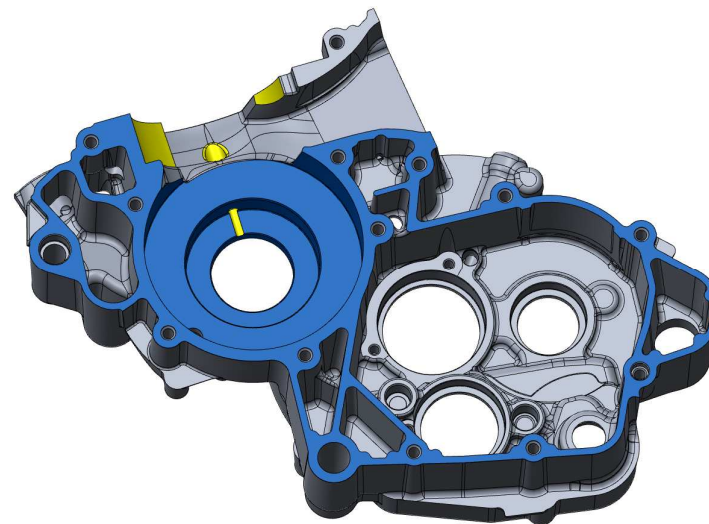
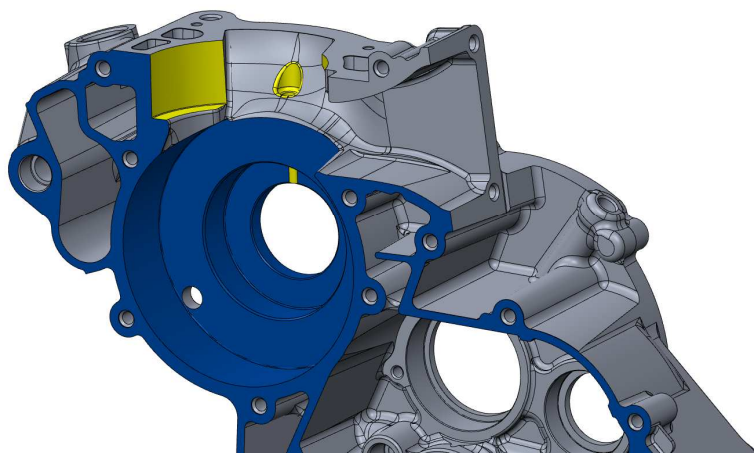
ENGINE 125 2T

❑ SE & SC ENGINE

- ❑ New optimized piston
- ❑ Improved Engine reliability : Tighter piston fitting



❑ Optimized lubrication hole : Crankshaft bearings



ENGINE 250 /300 2T



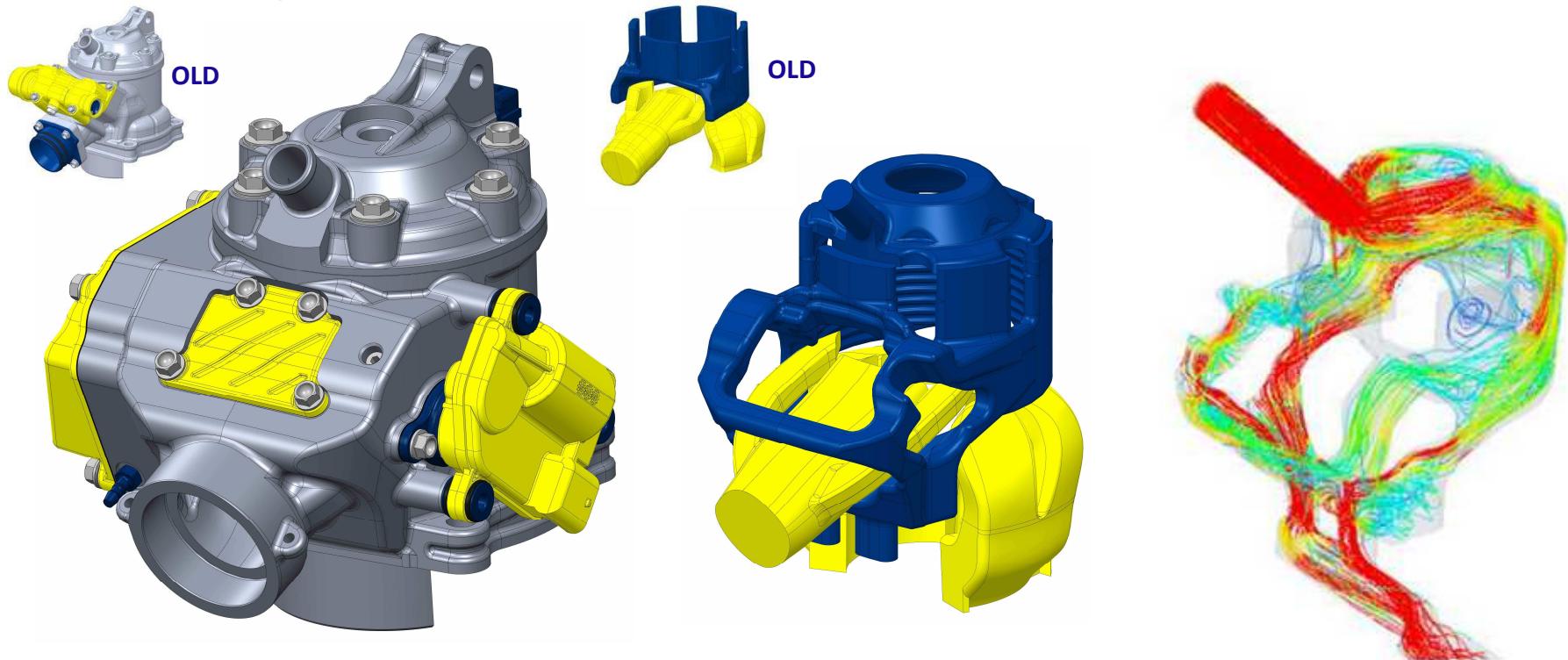
SHERCO

ENGINE 250 / 300 2T

❑ SE & SC ENGINE

❑ New cylinder :

- ❑ Improved Motor Performance (Torque, Linear Power Distribution)
- ❑ Cooling system optimized.
- ❑ Reduced Friction Piston/Cylinder
- ❑ - 15% weight reduction

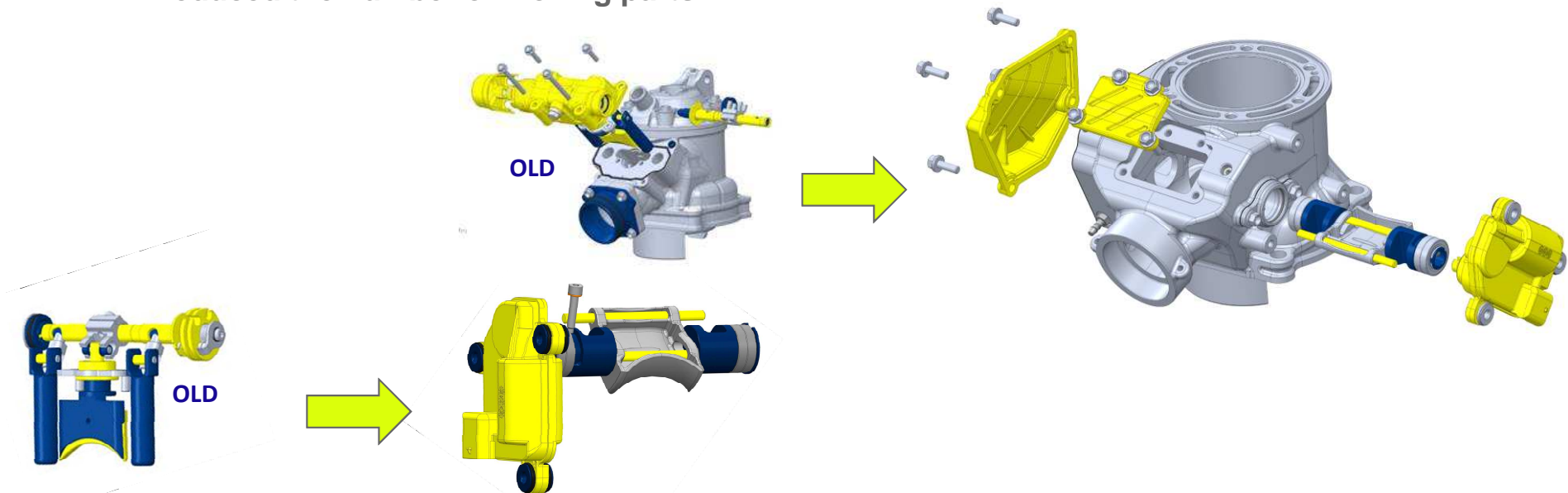


ENGINE 250 / 300 2T

❑ SE & SC ENGINE

❑ Exhaust valve system

- ❑ Flexible motor torque curve and power distribution
- ❑ Optimized throttle response
- ❑ Reduced the number of moving parts



❑ New exhaust valves actuation system

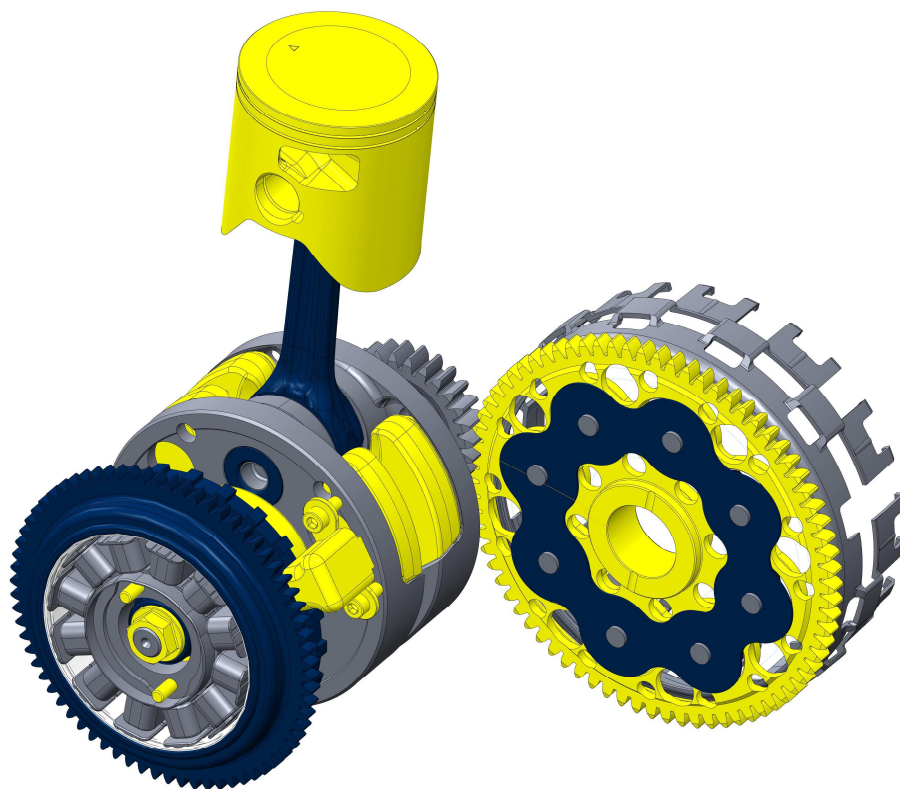
❑ New ignition management system

- ❑ SYNERJECT central system

ENGINE 250 / 300 2T

❑ SE & SC ENGINE

- ❑ Lightened ignition rotor
- ❑ Reduced Inertia



ENGINE 250 / 300 2T

❑ SE & SC ENGINE

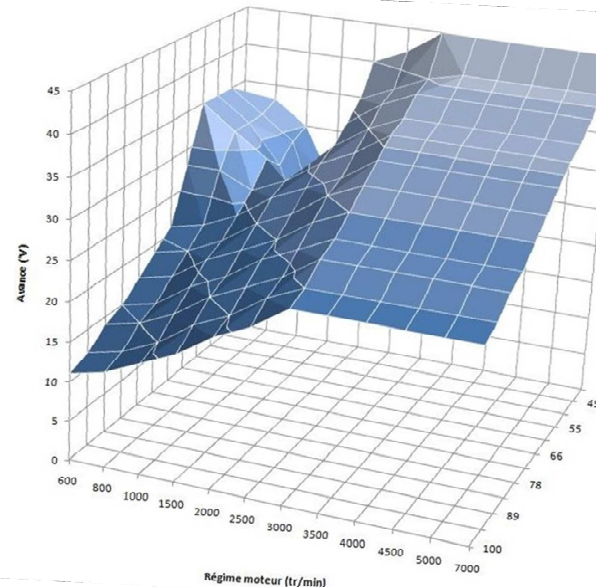
❑ New more powerful ignition coil

- ❑ Fouling rate reduced and improved engine efficiency



❑ New Carburation

- ❑ More stable fuel management
- ❑ + in low RPM situations



ENGINE 250 / 300 4T

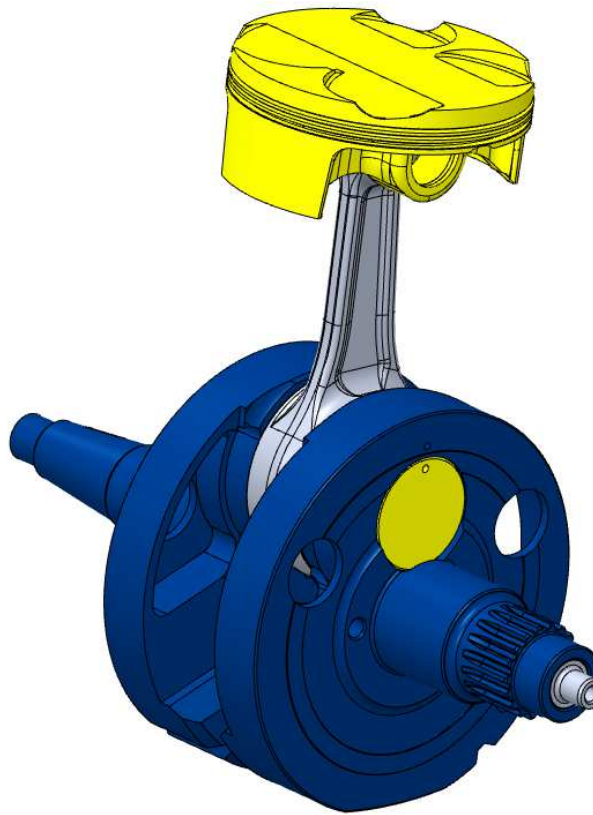


SHERCO

ENGINE 250 4T

❑ SE & SC ENGINE

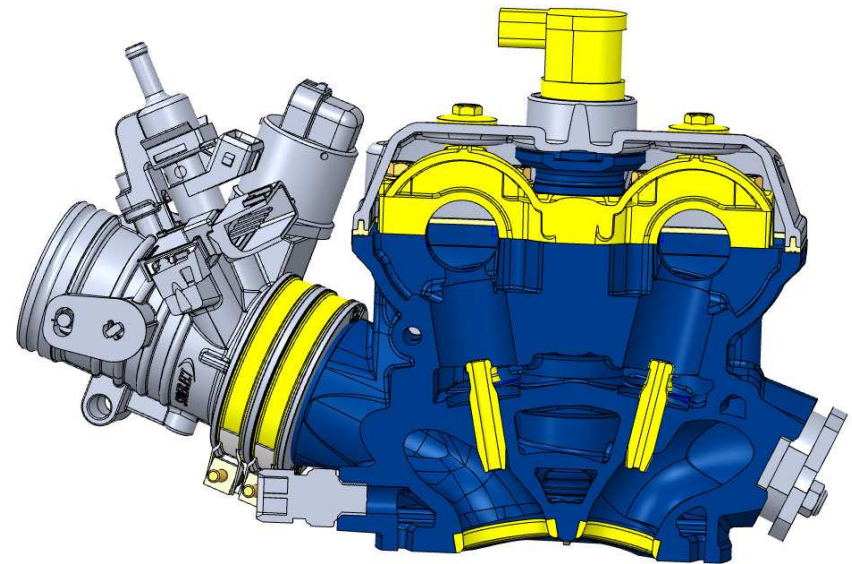
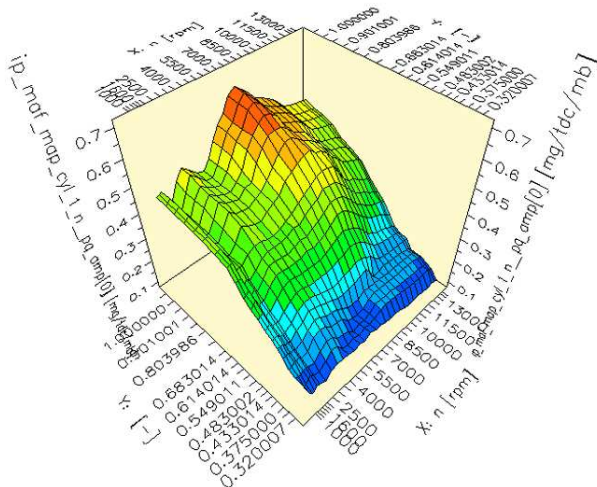
- ❑ Bore and stroke changed on the 250, piston is Ø 78 mm
- ❑ Improves power and engine response



ENGINE 250 / 300 4T

❑ SE & SC ENGINE

- ❑ 250 Evolution of the Cylinder Head Intake and exhaust ports
- ❑ More powerful engine, stronger on soft terrain with improved throttle response
- ❑ 300 Evolution of the exhaust port
- ❑ Improved exhaust system provides better engine response and greater high end speed
- ❑ New HARD / SOFT injection mapping
- ❑ 300 Specific : Smoother in low and mid range



ENGINE 250 / 300 4T

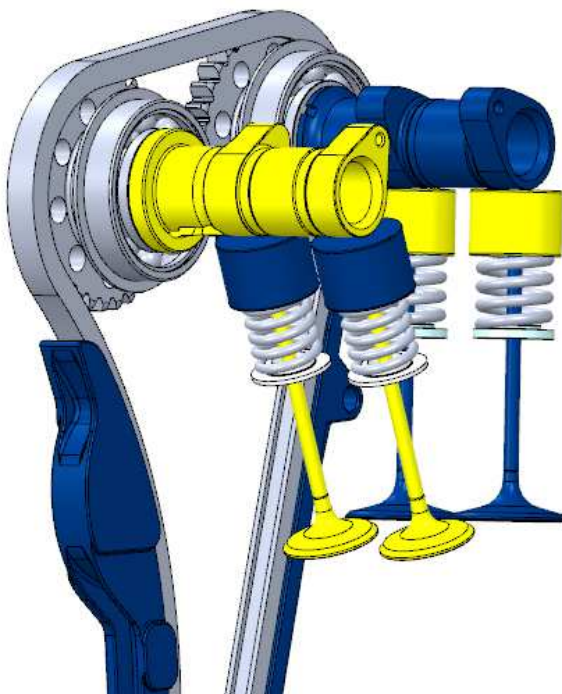
❑ SE & SC ENGINE

❑ 250 : intake and exhaust camshaft profile

- ❑ Intake camshaft profile : Improved low end torque and high end power
- ❑ Exhaust camshaft profile : Improved high end torque and high end power

❑ New Ø 31 mm intake valve and Ø 26 mm exhaust valve

- ❑ More torque at High RPM



ENGINE 250 / 300 4T

❑ SE & SC ENGINE

❑ New lightened clutch basket

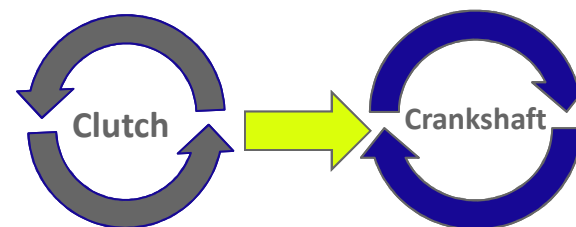
- ❑ - Inertia
- ❑ - 90 grams



OLD



NEW



ENGINE 450/500 4T

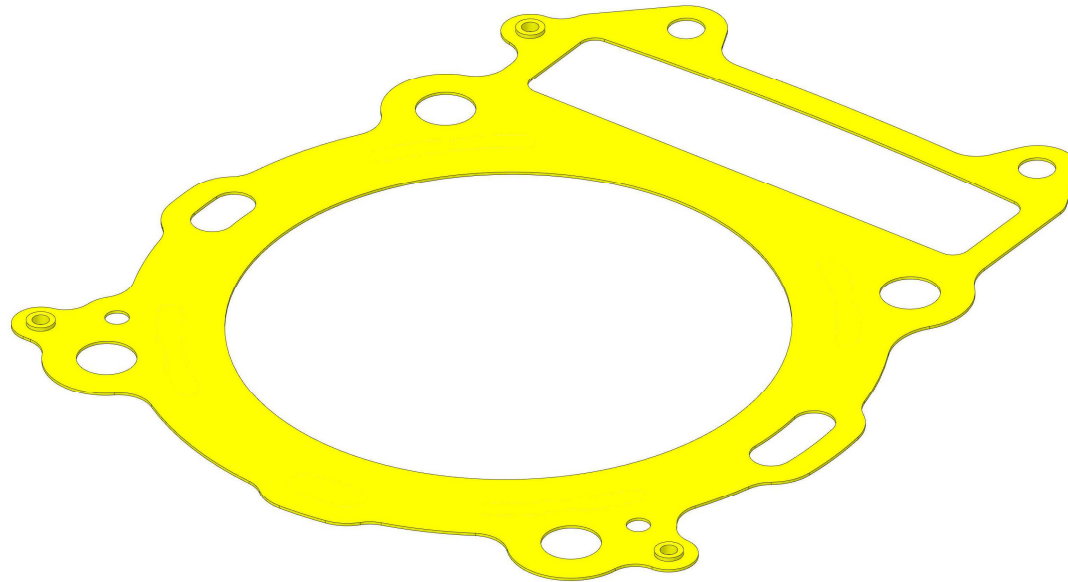


SHERCO

ENGINE 450 4T

- ❑ SE & SC ENGINE

- ❑ Reinforced cylinder head gasket



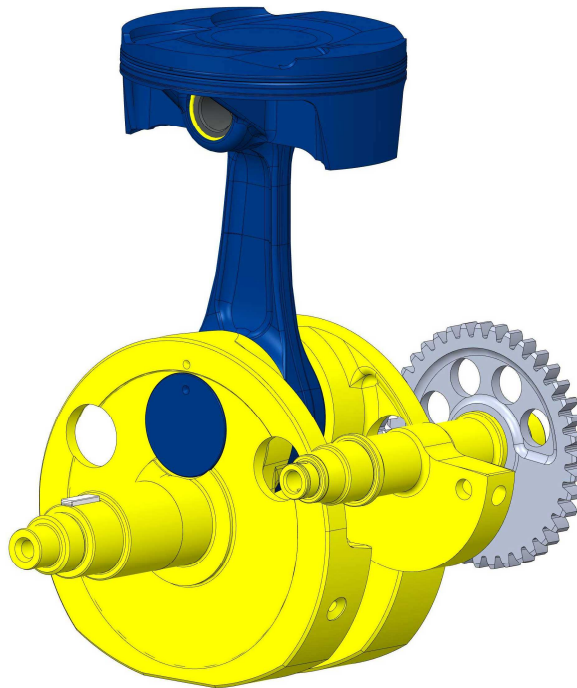
- ❑ Compression ratio increased from 11,8 to 12,3 :

- ❑ Improved throttle response from low speed

ENGINE 450/500 4T

- ❑ SE & SC ENGINE

- ❑ New internal balancing mechanism
- ❑ Rebalancing : less inertia



- ❑ New injection mapping:

- ❑ Power and torque improvement

ENGINE 500 4T

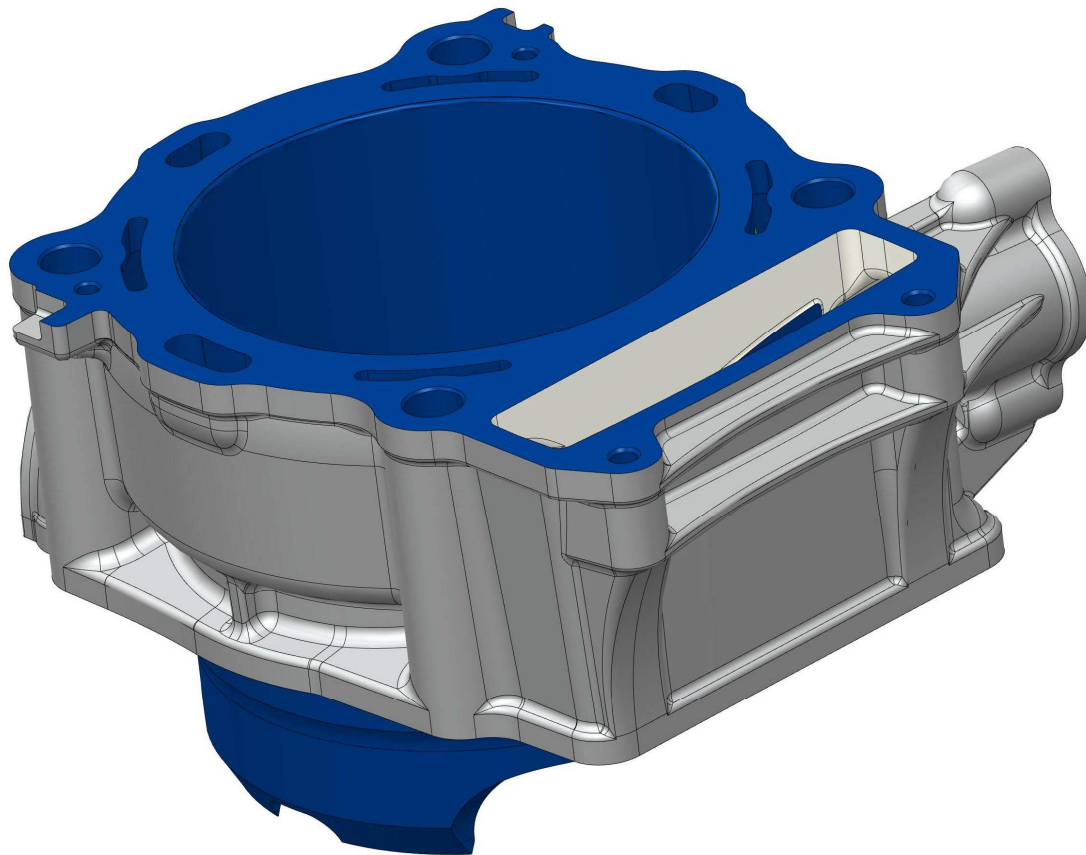


SHERCO

ENDURO 500 4T

☐ SE CYCLE PARTS

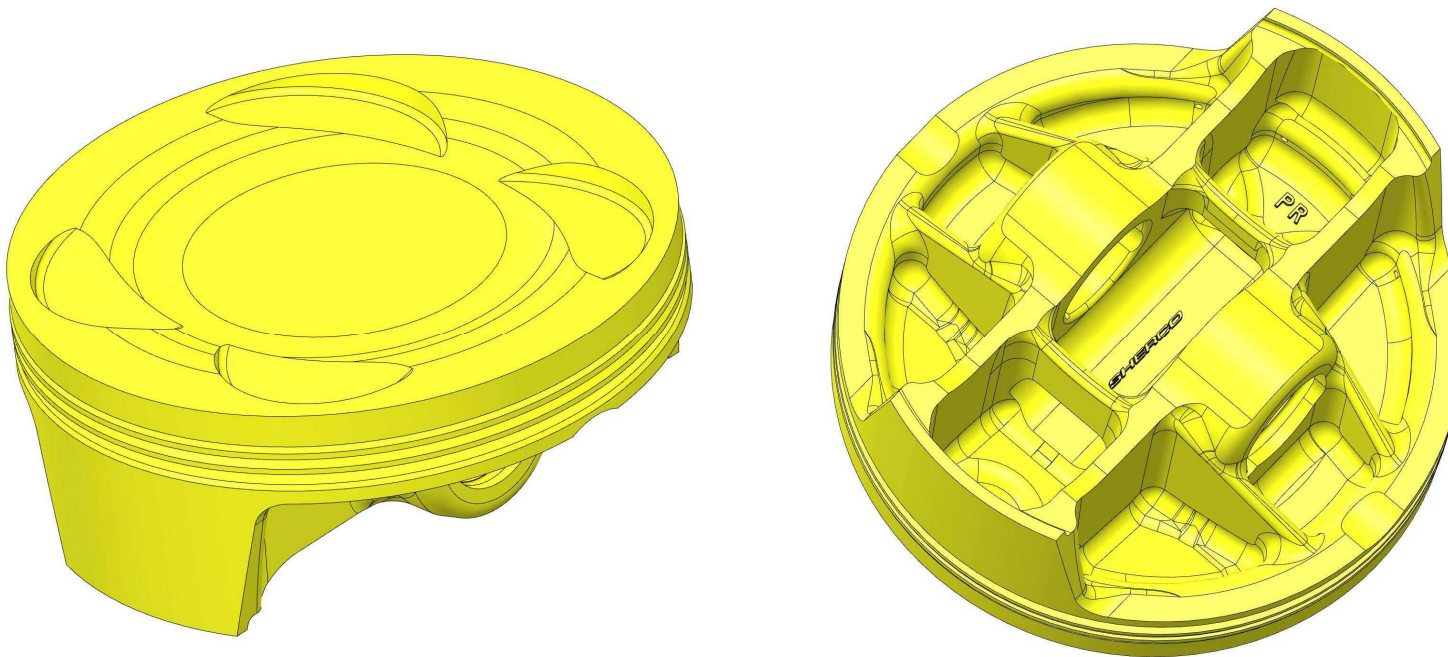
☐ Specific Cylinder



ENGINE 500 4T

❑ SE & SC ENGINE

- ❑ Specific Piston 98mm

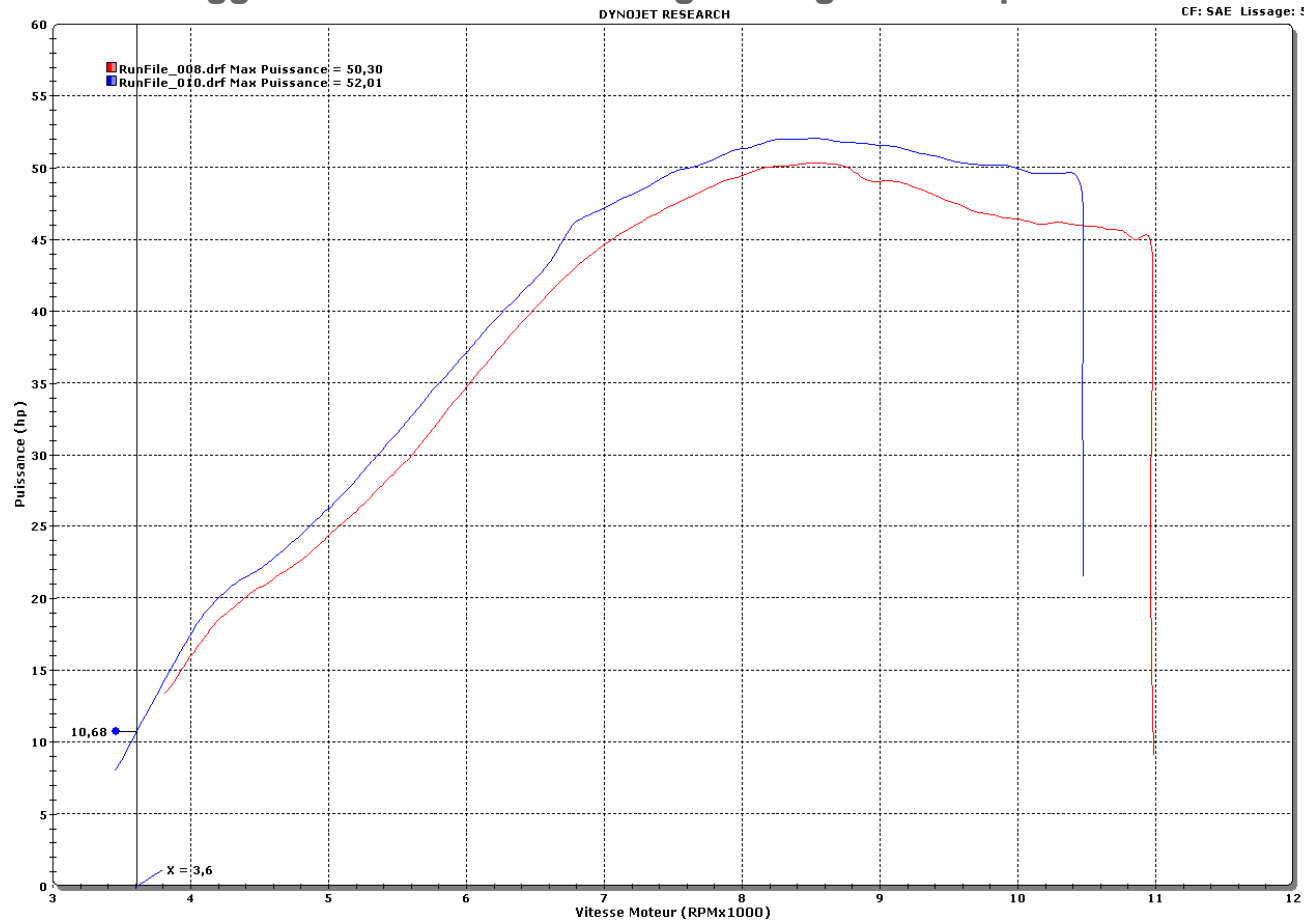


ENGINE 500 4T

☐ SE & SC ENGINE

☐ HARD / SOFT injection mapping

☐ More aggressive low and mid range revs gain of 2 hp 50> 52



LEISURE



SHERCO

LEISURE

- ❑ TY CLASSIC : Racing
 - ❑ Accessible, fun and easy to handle



TRIAL

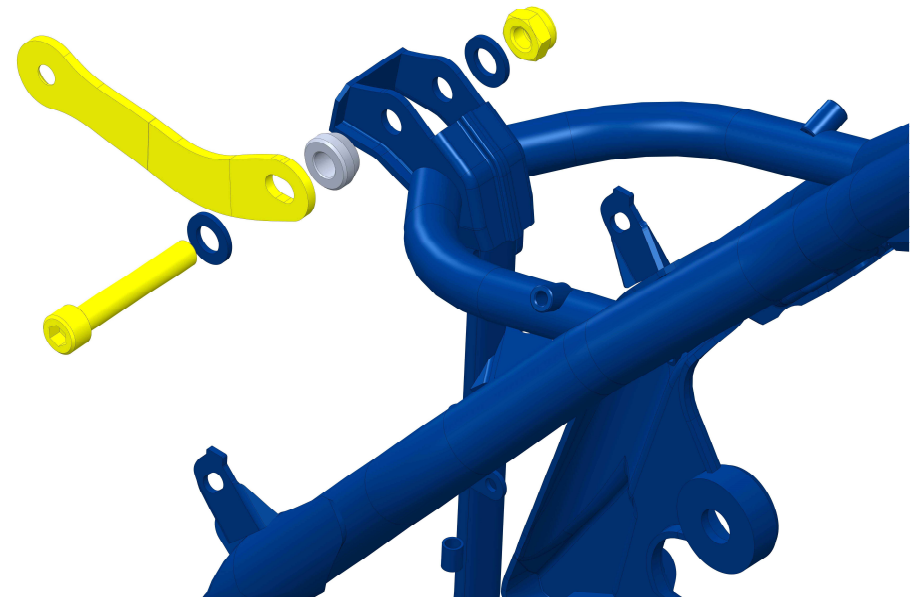
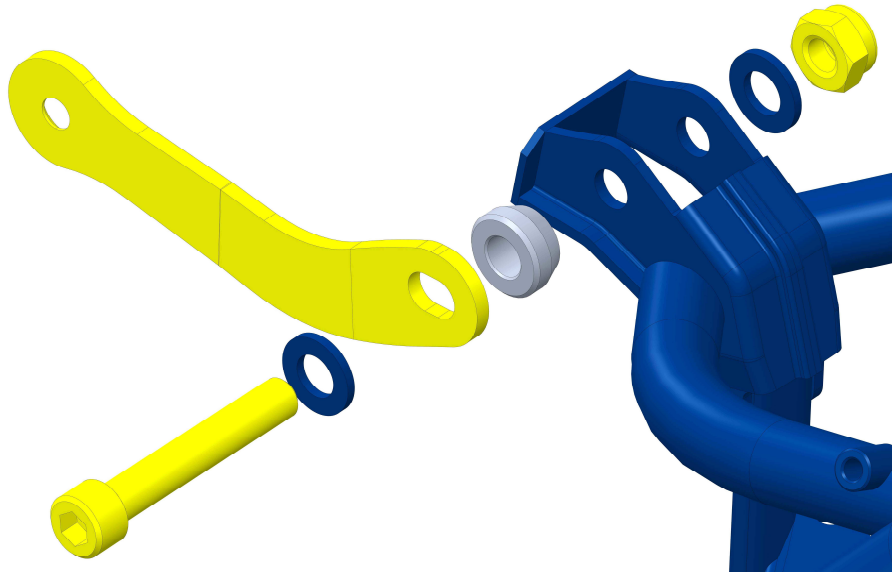


SHERCO

TRIAL

❑ ST RACING CYCLE PARTS

- ❑ New removable upper mounting bracket for the muffler



TRIAL RACING

☐ ST RACING CYCLE PARTS

- ☐ New 2019 Racing graphics kit
- ☐ Tech Steel Fork
- ☐ R16V Rear Shock



SHERCO

TRIAL FACTORY

☐ ST FACTORY CYCLE PARTS

☐ New 2019 Factory Graphics Kit

☐ 2019 Neken Trial Factory Handlebar pad



☐ Reiger 3-way shock absorber



☐ Tech Aluminium with settings

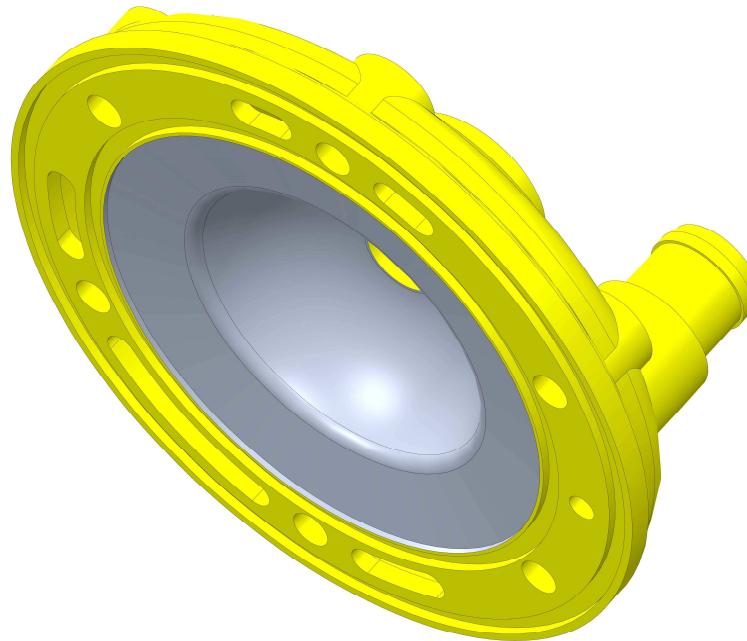


TRIAL

❑ ST ENGINE

❑ Cylinder head 125-250-300

- ❑ Compression ratio and dome shape changed
- ❑ Modified cylinder head for the 300 racing that improves performance
 - 125 : 17,7 different profile
 - 250 : 10,72 > 10,91
 - 300 : 11,34 > 11,63

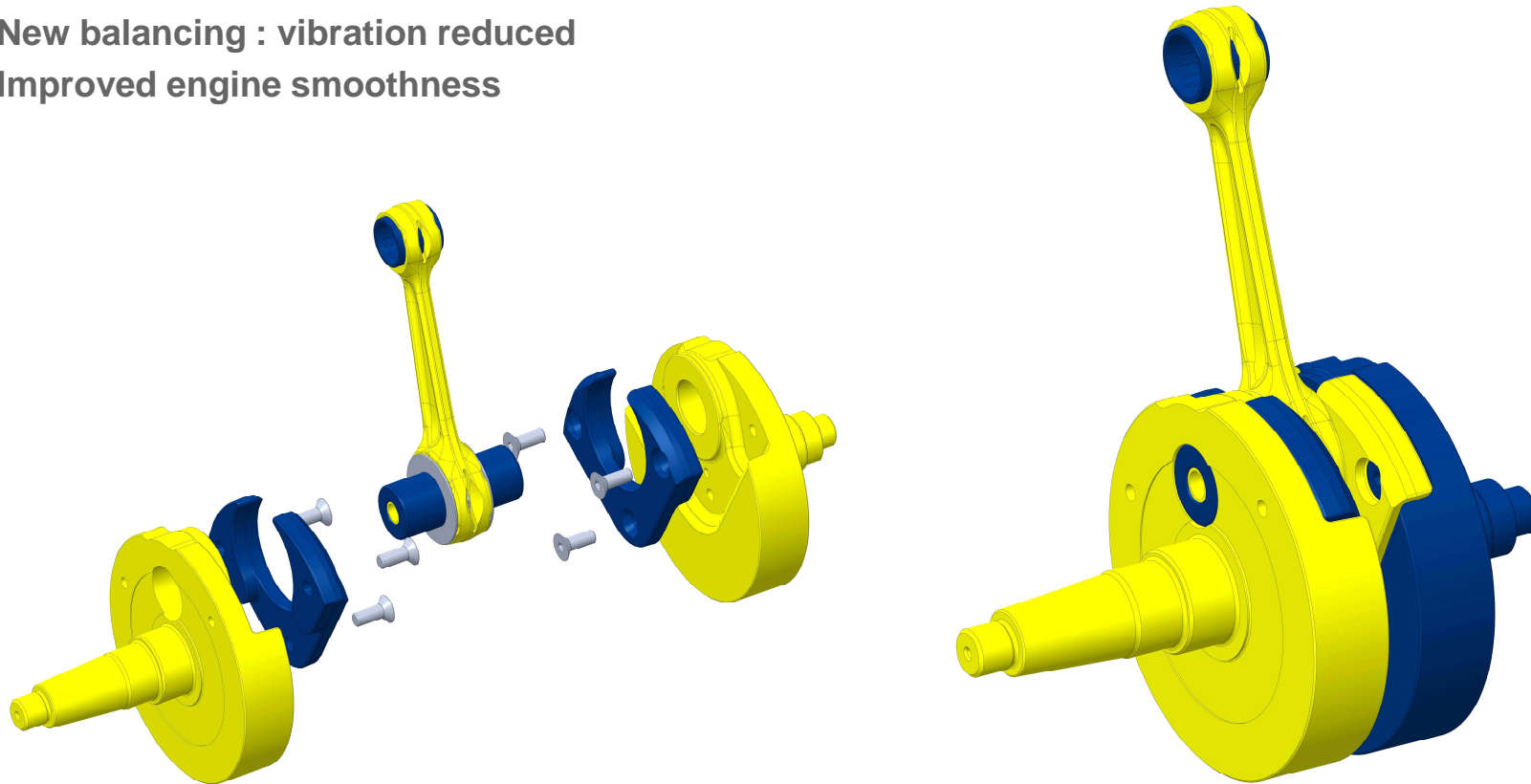


TRIAL

❑ ST ENGINE

❑ Crankshaft 250-300

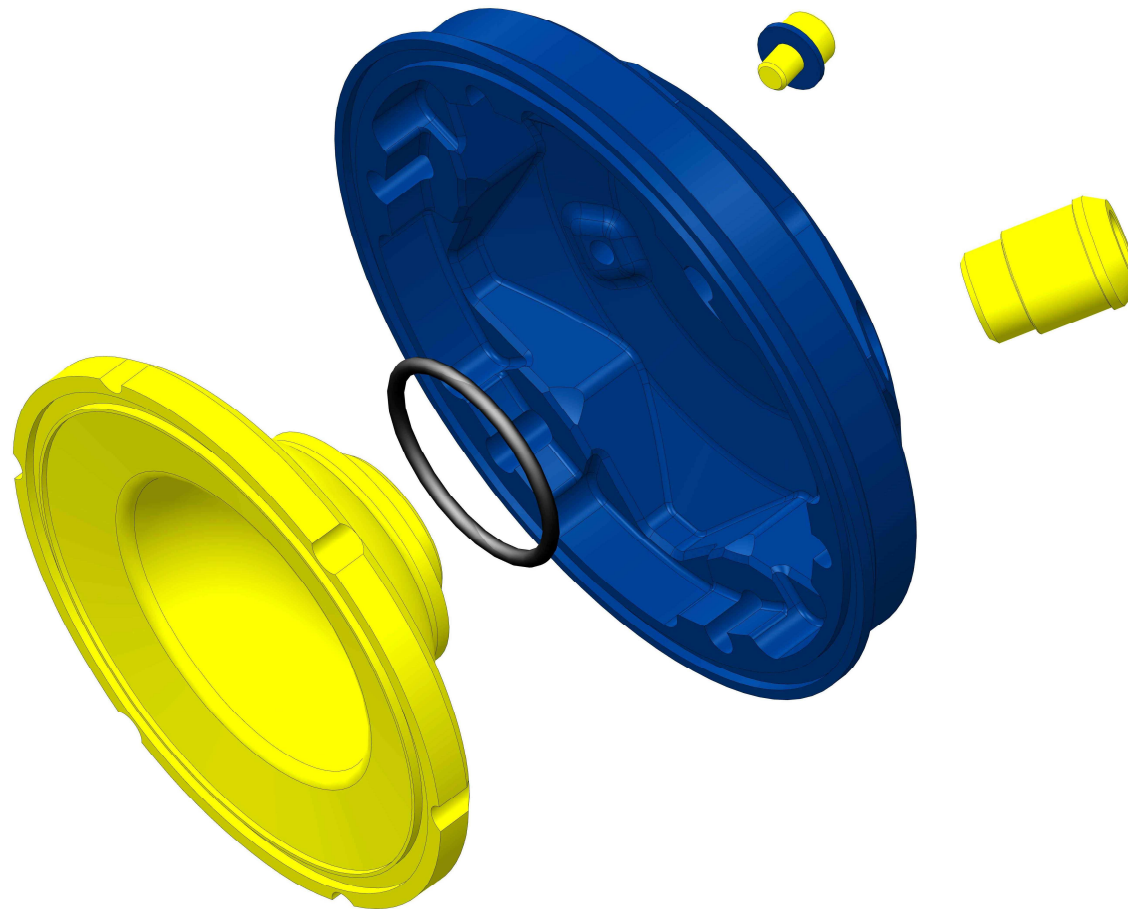
- ❑ New balancing : vibration reduced
- ❑ Improved engine smoothness



TRIAL

- ❑ ST FACTORY ENGINE

- ❑ 300 Interchangeable cylinder head dome EVO



TRIAL

☐ ST FACTORY ENGINE

☐ New CDI curve :

☐ Low-speed engine power gain



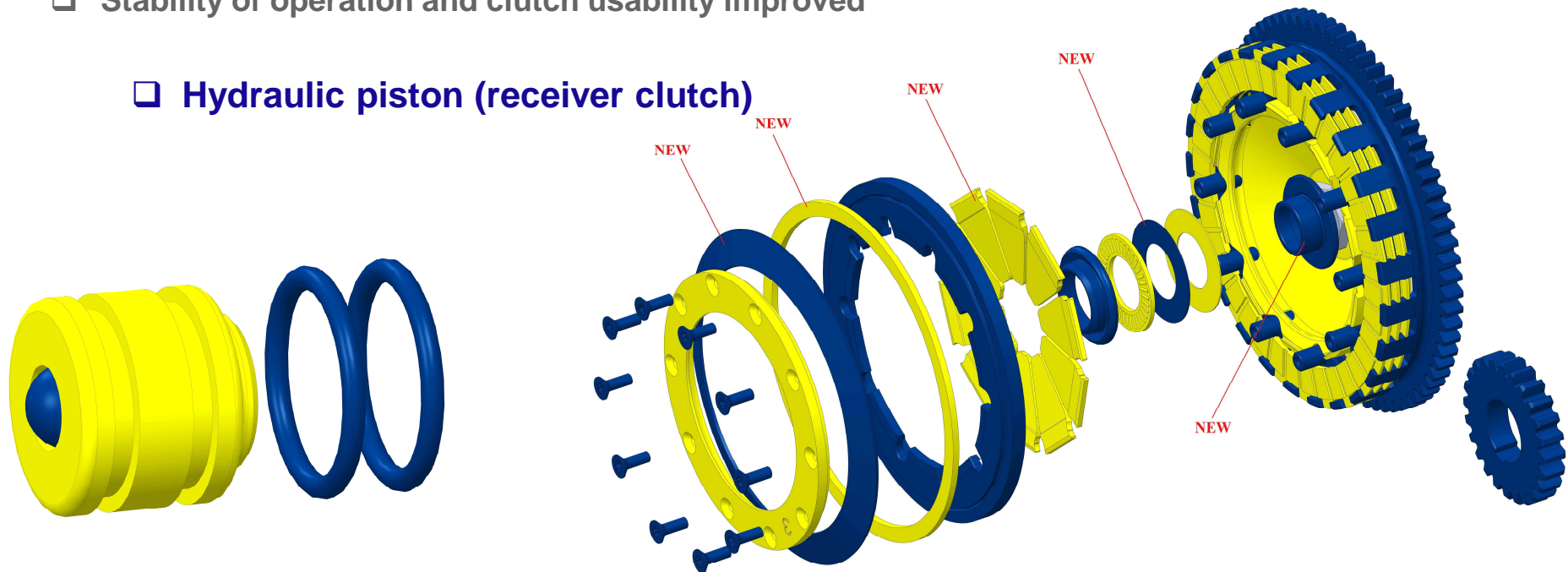
TRIAL

☐ ST FACTORY ENGINE

☐ Evolution diaphragm clutch

- ☐ New spring
- ☐ New spring actuation levers
- ☐ New preload washer
- ☐ lever effort reduction – 40%
- ☐ Clutch disc release improvement
- ☐ Stability of operation and clutch usability improved

☐ Hydraulic piston (receiver clutch)



SPECIFIC RACE PRODUCT

- ❑ Baja Edition
 - ❑ Delivered in racing condition with Standard parts Kit



SHERCO

II. PRODUCT RANGE

❑ SHERCO STORE CONCEPT



II. PRODUCT RANGE

PG & A

CLOTHING

Paddock Clothing



MAN JACKET
V030.16 (S)
V031.16 (M)
V032.16 (L)
V033.16 (XL)
V035.16 (XXL)
V045.16 (XXXL)

WOMAN JACKET
V228.16 (XS)
V227.16 (S)
V228.16 (S)
V230.16 (M)
V230.16 (L)
V230.16 (L)

MAN SOFTSHELL
V232.16 (S)
V231.16 (M)
V230.16 (L)
V240.16 (XL)
V240.16 (XXL)
V247.16 (XXXL)

WOMAN SOFTSHELL
V332.16 (XS)
V333.16 (S)
V334.16 (S)
V335.16 (M)
V336.16 (L)
V336.16 (L)

MAN BODYWARMER
V352.16 (S)
V353.16 (M)
V354.16 (L)
V355.16 (XL)
V356.16 (XXL)
V357.16 (XXXL)

WOMAN BODYWARMER
V358.16 (XS)
V359.16 (S)
V360.16 (S)
V361.16 (M)
V362.16 (L)

MAN HOODIE
V252.16 (S)
V254.16 (M)
V255.16 (L)
V256.16 (XL)
V257.16 (XXL)
V258.16 (XXXL)

WOMAN HOODIE
V242.16 (XS)
V243.16 (S)
V244.16 (S)
V245.16 (M)
V246.16 (L)

MAN SHIRT
V080.16 (S)
V081.16 (M)
V082.16 (L)
V083.16 (XL)
V084.16 (XXL)
V254.16 (XXXL)

MAN T-SHIRT
V040.16 (S)
V041.16 (M)
V042.16 (L)
V043.16 (XL)
V255.16 (XXL)
V255.16 (XXXL)

MECHANICAL T-SHIRT
V040 (S)
V041 (M)
V042 (L)
V043 (XL)
V245 (XXL)

MECHANICAL PANTS
V224 (XS)
V225 (S)
V226 (S)
V227 (S)



MECHANICAL SHORT
V270 (XS)
V271 (S)
V272 (S)
V273 (S)
V274 (S)
V275 (S)
V276 (S)
V277 (S)

BLACK JACKET
V307 (S)
V308 (M)
V309 (L)
V400 (XL)
V401 (XXL)
V402 (XXXL)

Enduro Equipments



ENDURO BODYWARMER
V352.17 (S)
V353.17 (M)
V354.17 (L)

ENDURO JACKET
V155.17 (S)
V156.17 (M)
V157.17 (L)
V158.17 (XL)
V159.17 (XXL)
V160.17 (XXXL)

ENDURO JERSEY
V286.17 (S)
V287.17 (M)
V288.17 (L)
V289.17 (XL)
V290.17 (XXL)
V291.17 (XXXL)

ENDURO PANTS
V162.17 (XS)
V163.17 (S)
V164.17 (S)
V165.17 (M)
V166.17 (L)
V167.17 (XL)
V168.17 (XXL)
V169.17 (XXXL)

ENDURO GLOVES
V213.17 (S)
V214.17 (M)
V215.17 (L)
V216.17 (XL)
V217.17 (XXL)
V218.17 (XXXL)

TRIAL JERSEY
V018.15 (S)
V019.15 (M)
V020.15 (L)
V021.15 (XL)
V022.15 (XXL)
V023.15 (XXXL)



TRIAL PANTS
V030.15 (XS)
V031.15 (S)
V032.15 (M)
V033.15 (L)
V034.15 (XL)
V035.15 (XXL)
V036.15 (XXXL)

TRIAL GLOVES
V205.15 (S)
V206.15 (M)
V207.15 (L)
V208.15 (XL)
V209.15 (XXL)
V210.15 (XXXL)

Equipments



DRAPPER
V055.16

LONG SOCKS
V228 (M)
V229 (L)
V230 (XL)

SHORT SOCKS
V231 (M)
V232 (L)
V233 (XL)

BEANIE
V054.16

Luggage



HYDRATION BAG
67.00

TROLLEY BAG
5133

BACKPACK
6750

DUFFLE BAG
6800

II. PRODUCT RANGE

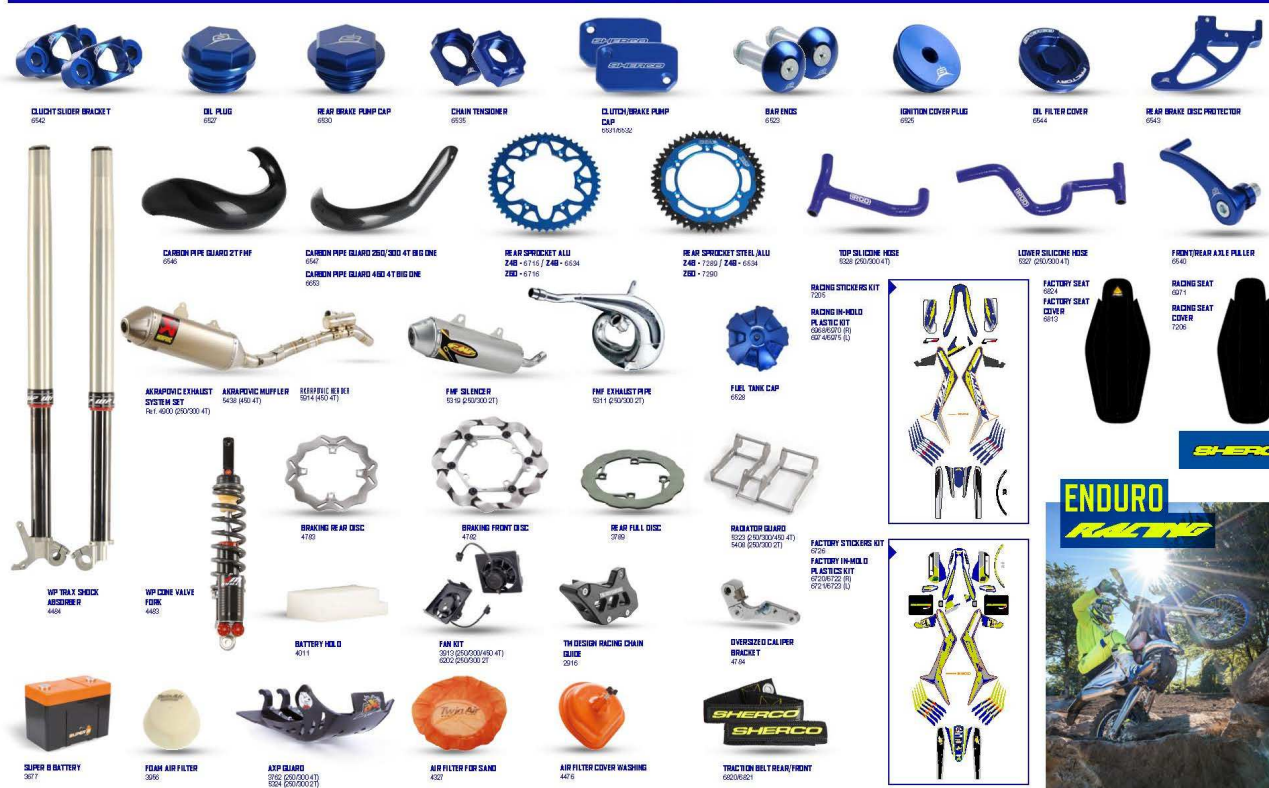
□ PG & A

RACING PARTS

TRIAL RACING PARTS



ENDURO RACING PARTS



SHERCO

II. PRODUCT RANGE

□ PG & A

ACCESSORIES



SHERCO

2019 LAUNCH



**THE FASTEST
GROWING
COMPANY IN
THE OFF-
ROAD
MOTORCYCLE
INDUSTRY**

SHERCO