

SHERCO



2021 TRIALS LAUNCH

THE FASTEST GROWING COMPANY IN THE OFF-ROAD MOTORCYCLE INDUSTRY



SHERCO

2021 TRIALS VIDEO

TRIAL
2021



SHERCO

SHERCO

TRIALS RACING

❑ ST RACING SPECIFIC CYCLE PARTS

- ❑ New 2021 graphics kit
- ❑ Optimization and simplification of the wiring harness

Light system PLUG and PLAY

- ❑ New swingarm (different core)
- ❑ 42 tooth rear sprocket
- ❑ Aluminum color frame
- ❑ Graphite color triple trees and handlebar clamps
- ❑ Black rims with yellow hubs



SHERCO

TRIALS RACING

❑ ST RACING SPECIFIC CYCLE PARTS

❑ New 2021 Racing graphics kit (same as Factory)

Because we love all our customers in the same way and we want to offer everyone a motorcycle with the most successful design possible.

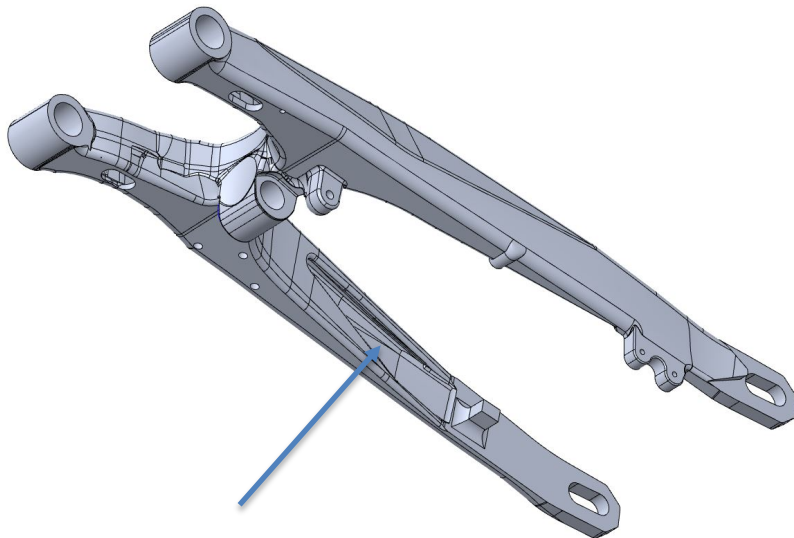


TRIALS RACING

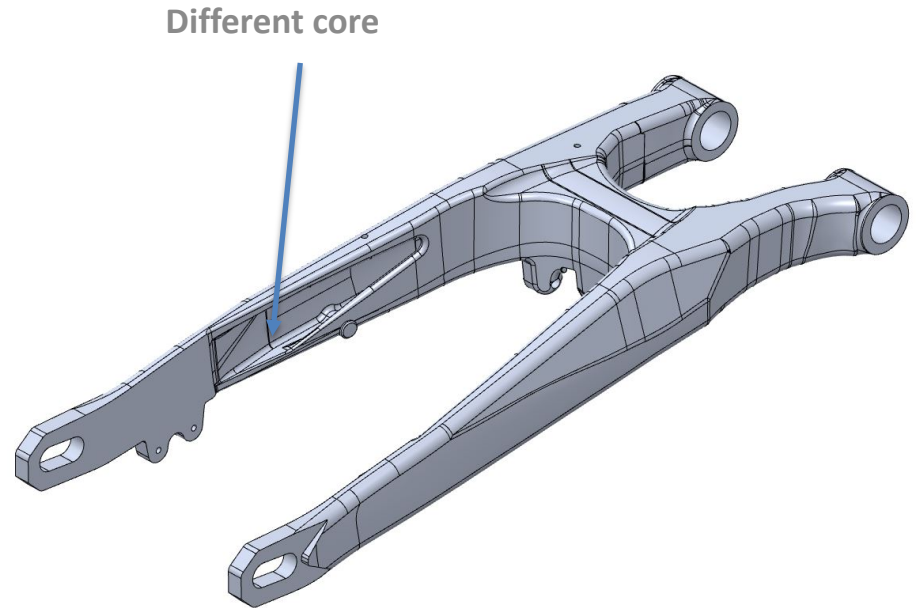
❑ ST RACING SPECIFIC CYCLE PARTS

❑ New swingarm (different core)

Less weight, less rigidity, more bending, therefore more grip.



Different core



Different core

TRIALS RACING

❑ ST RACING SPECIFIC CYCLE PARTS

❑ 42 tooth rear sprocket

The improved engine thermodynamics at low revs allows us to make this modification to the primary drive.

The chain effect is reduced which provides better traction.



TRIALS RACING

❑ ST RACING SPECIFIC CYCLE PARTS

❑ Black rims with yellow hubs



TRIALS RACING

❑ FOR WHICH RIDER?

The Racing ST range is made for people who love to spend time on their bike. From a Sunday ride to more exigent conditions “trials sections”, these bikes have proven their ability to perform in difficult trials conditions. The rider will find the bike to be reliable, it will inspire confidence and provide strong performance.



TRIALS FACTORY

☐ ST RACING SPECIFIC CYCLE PARTS

+ evolutions of the RACING ST

- ☐ New 2021 graphics kit
 - ☐ New rear suspension links
 - ☐ New REIGER rear shock settings
 - ☐ HARD ROCK foot pegs
 - ☐ TECH aluminum fork
 - ☐ Blue cylinder head
- with interchangeable dome
- ☐ Galfer brake discs



SHERCO

TRIALS FACTORY

❑ ST FACTORY SPECIFIC CYCLE PARTS

❑ New 2021 FACTORY graphics kit

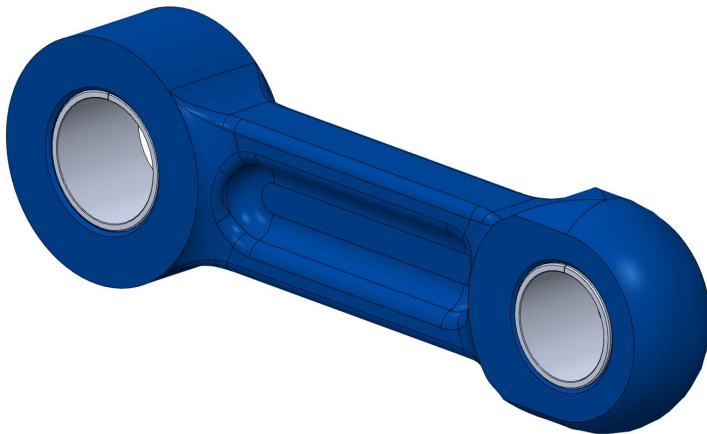


TRIALS FACTORY

❑ ST FACTORY SPECIFIC CYCLE PARTS

❑ New rear suspension links

Changes the attitude of the motorcycle, it lowers the motorcycle, this is ideal for balance and compression.



TRIALS FACTORY

❑ ST FACTORY SPECIFIC CYCLE PARTS

❑ New REIGER rear shock settings

The settings have been optimized for use with the new suspension links



TRIALS FACTORY

❑ ST FACTORY SPECIFIC CYCLE PARTS

❑ S3 HARD ROCK foot pegs

Black aluminium pegs provide a better riding position.



TRIALS FACTORY

❑ ST FACTORY SPECIFIC CYCLE PARTS

❑ GALFER brake discs (front and rear)



TRIALS FACTORY

❑ FOR WHICH RIDER?

The Factory ST range is dedicated to the most demanding riders. Premium components and factory finishes bring the bike to another level, ready for competition. It is the choice of our Factory Racing Team.

Ride it to the highest steps of the podiums!



ST ENGINES

ENGINE RANGE

2 STROKE

- 125cc

2 STROKE

- 250cc - 300cc



ST ENGINES

❑ 125 250 300 ST

❑ Evolution of the exhaust system

The exhaust port has been redesigned to provide low RPM power. More power is available as soon as the throttle is opened, the reaction time of the motorcycle is improved.



250 300 ST ENGINE

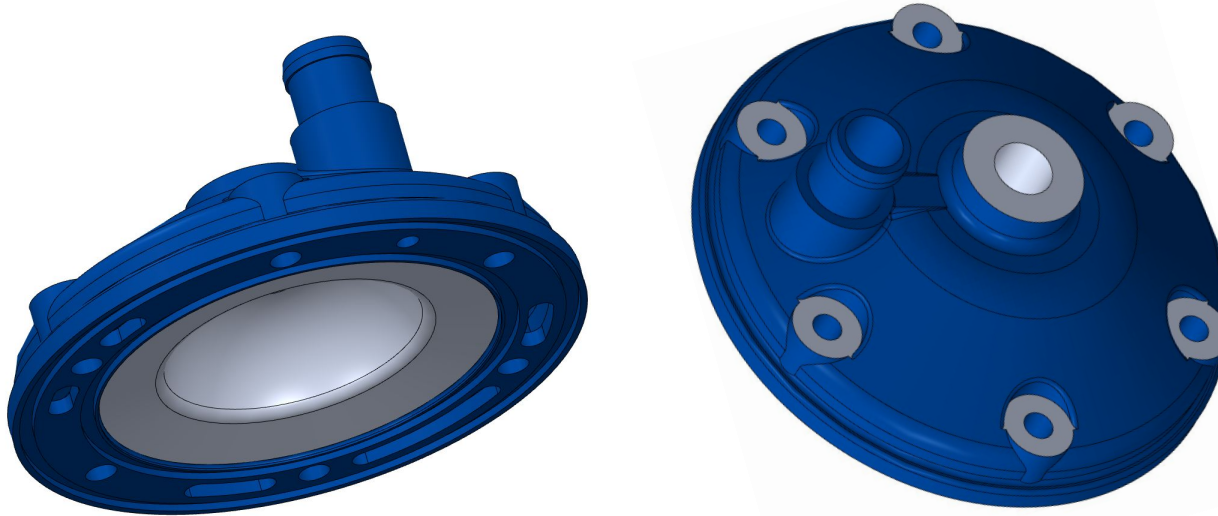


250 300 ST ENGINE

❑ 250 300 ST

❑ New cylinder head (with different compression ratio)

Increased volume

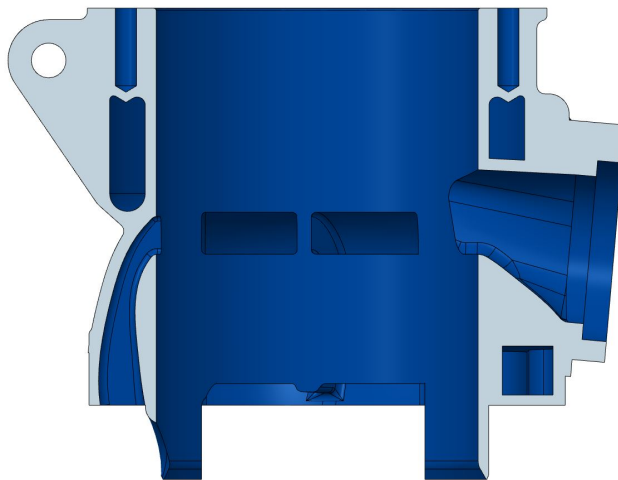


250 300 ST ENGINE

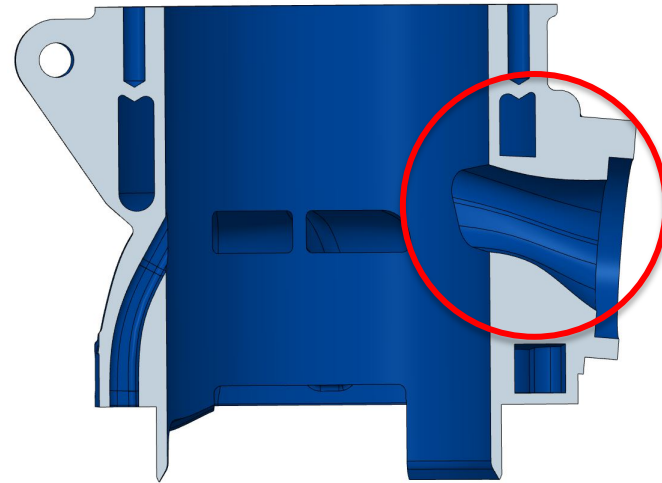
❑ 250 300 ST

❑ Evolution of the engine cylinder exhaust exit

The size and shape have been changed.



2020



2021

250 300 ST ENGINE

❑ 250 300 ST

❑ Crankshaft rebalanced

Works in conjunction with the new cylinder head.

